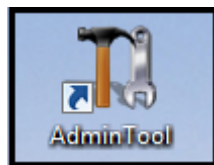


# TSplus Administration Tool overview

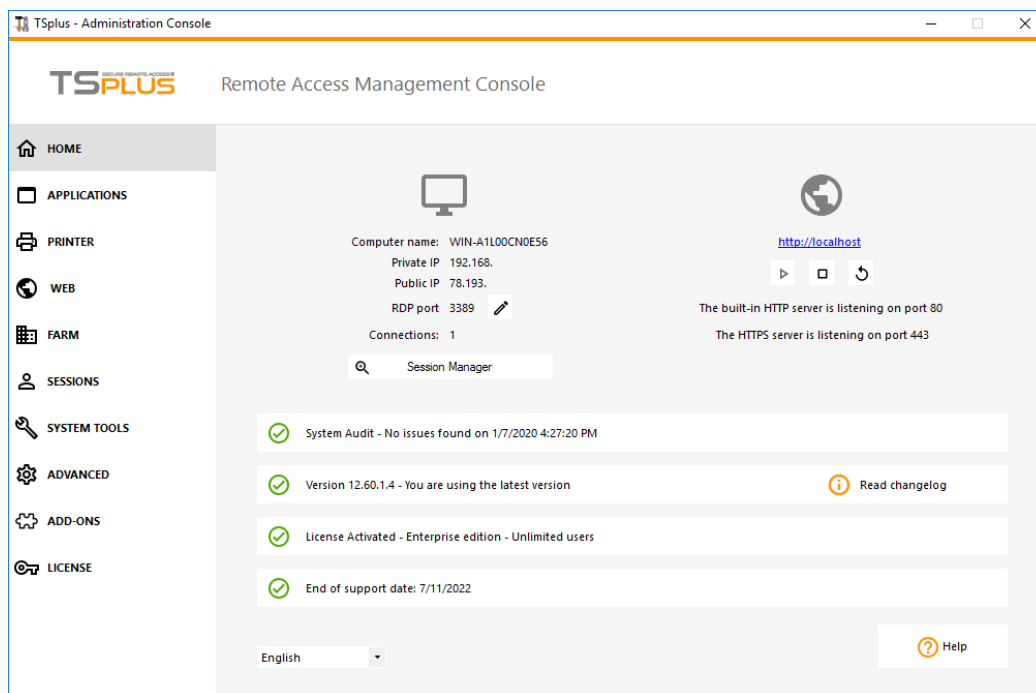
After [installing TSplus](#), your server is immediately ready to go.

However, you can **customize all the system parameters** with a powerful Administrator Tool.

To do so, click on the following icon created on your Desktop:



The Administrator Tool will then be displayed:



Want to get help on a feature of TSplus Admin Tool quickly? Just **click on a tile or on a tab** to go to the matching help!