

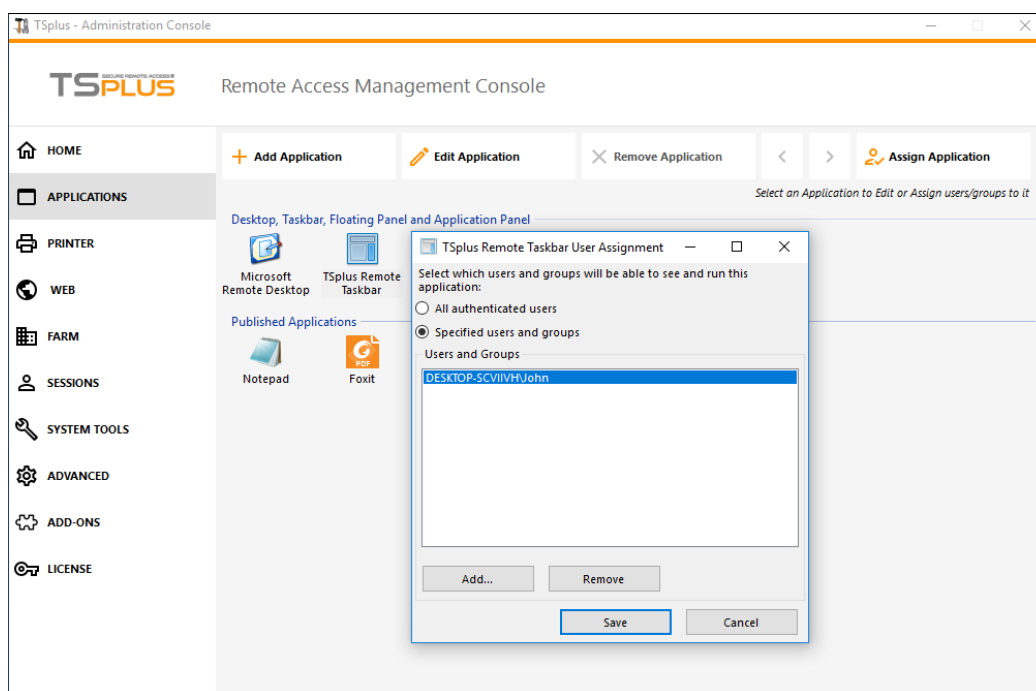
# Remote Taskbar and Desktops themes

## Administrator tools on the server

With the AdminTool, the Administrator can choose between 4 display modes when he assigns applications: [The Microsoft Remote Desktop](#), [The Remote Taskbar](#), [The Floating Panel](#) or [The Application Panel](#). The Remote Taskbar, Floating and Application Panels are available for any connection method.

## TSplus Remote Taskbar

When you assign applications to an user, you can enable the TSplus remote taskbar. The TSplus Taskbar is extremely useful when a session is run with the Seamless TSplus connection program. The user can launch remote applications with one click on the TSplus taskbar and still have the full local Desktop available. You can assign the Remote Taskbar to your users or groups by double-clicking on it or by selecting it, then clicking on the "Assign Application" tile:



The Administrator can easily decide what will be the default Remote Desktop theme the user will see when opening a session. Select the TSplus Remote Taskbar, then click on "Edit Application":

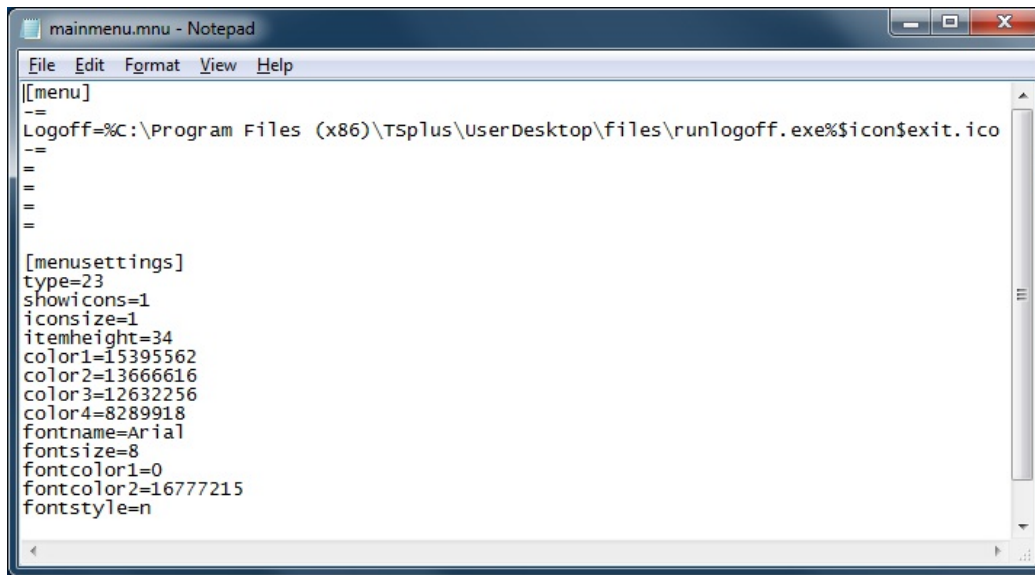
The screenshot shows a window titled "Taskbar Theme Preference" with a close button in the top right corner. The window is divided into four sections:

- Taskbar Theme Preference**
  - Select your preferred TSplus Taskbar theme
    - ☒ Use Blue taskbar theme as default
    - ☐ Use Silver taskbar theme as default
    - ☐ Use OnTop taskbar theme as default
    - ☐ Use Desktop theme one as default
    - ☐ Use Desktop theme two as default
    - ☐ Use Logon theme as default
  - Application working area within the selected theme
    - ☐ Full screen
    - ☐ Do not overlap the local taskbar
    - ☐ Do not overlap the Blue or Silver bar
  - Replace logo/wallpaper on the Desktop themes
- Minimize buttons Preference**
  - Minimize Buttons preference
    - ☐ Justify left      ☐ Center      ☐ Justify right
    - ☐ On the screen top      ☒ On the screen bottom
- Notification area (Systray) Preference**
  - Show/Hide the Notification Area (Systray)
    - ☐ Show the Notification area      ☐ Hide the Notification Area
- Security Preference**
  - Show/Hide log off button
    - ☒ Show log off button      ☐ Hide log off button

- Only the Administrator can choose the themes for his users.
- He can choose to display the maximized applications in full-screen mode or not to overlap the TSplus taskbar as well as the Silver or Blue taskbars.
- Minimized buttons position on the taskbar can be changed (on top of the screen, on the bottom, on the right, the left side, or in the center).  
The administrator can even decide to display it on top of the user screen instead of the default bottom side.
- Systray icons can be hidden by ticking the "Hide the Notification Area" circle.
- Since TSplus 12.60 version, the Logoff button can now be hidden.

By editing the users menu, the Administrator can add/suppress applications and functionalities. Customization of the users menu is easy.

The content of the users menu (located in Program Files/TSplus/UserDesktop/mainmenu.mnu) is modifiable by the administrator using Notepad:



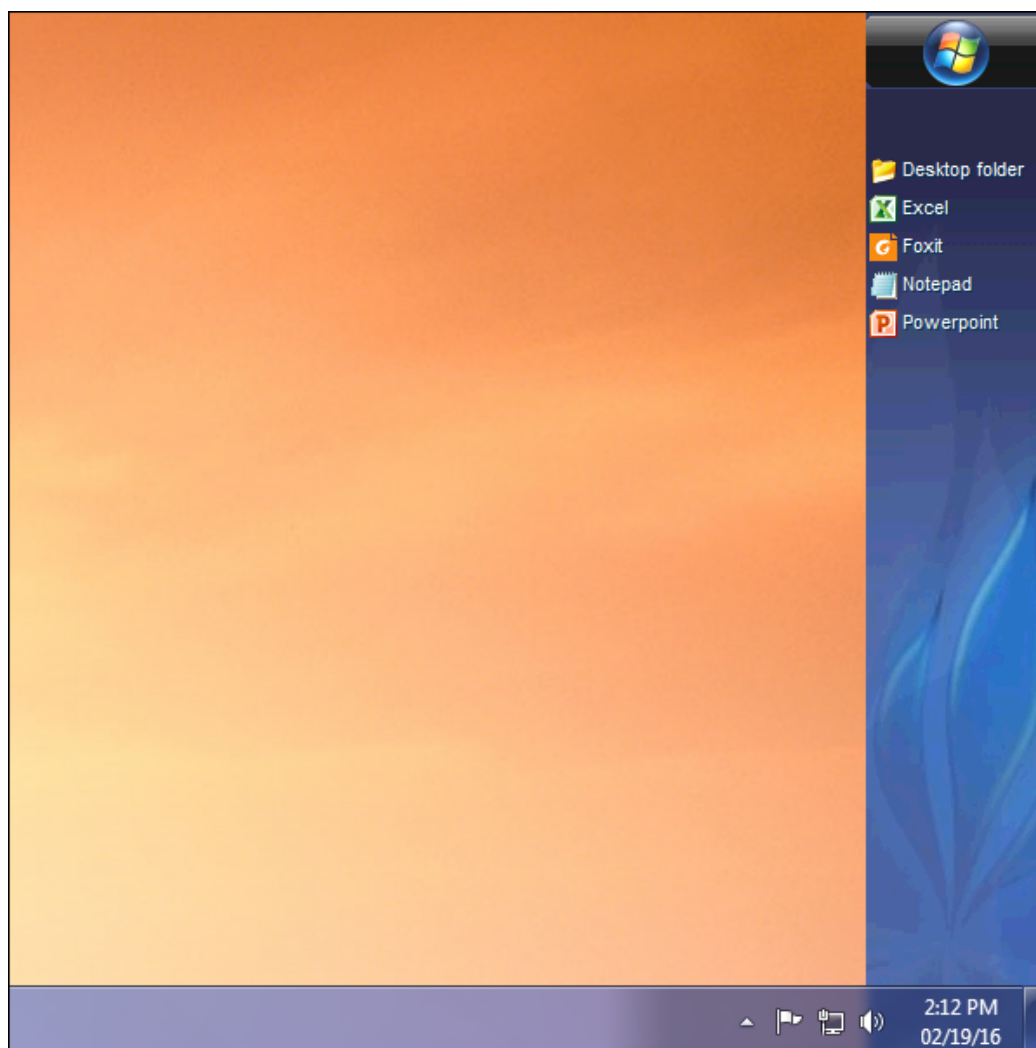
## Seamless connection program

On the applications tile of the AdminTool the administrator can select 3 different styles of Remote Desktop TSplus Taskbar.

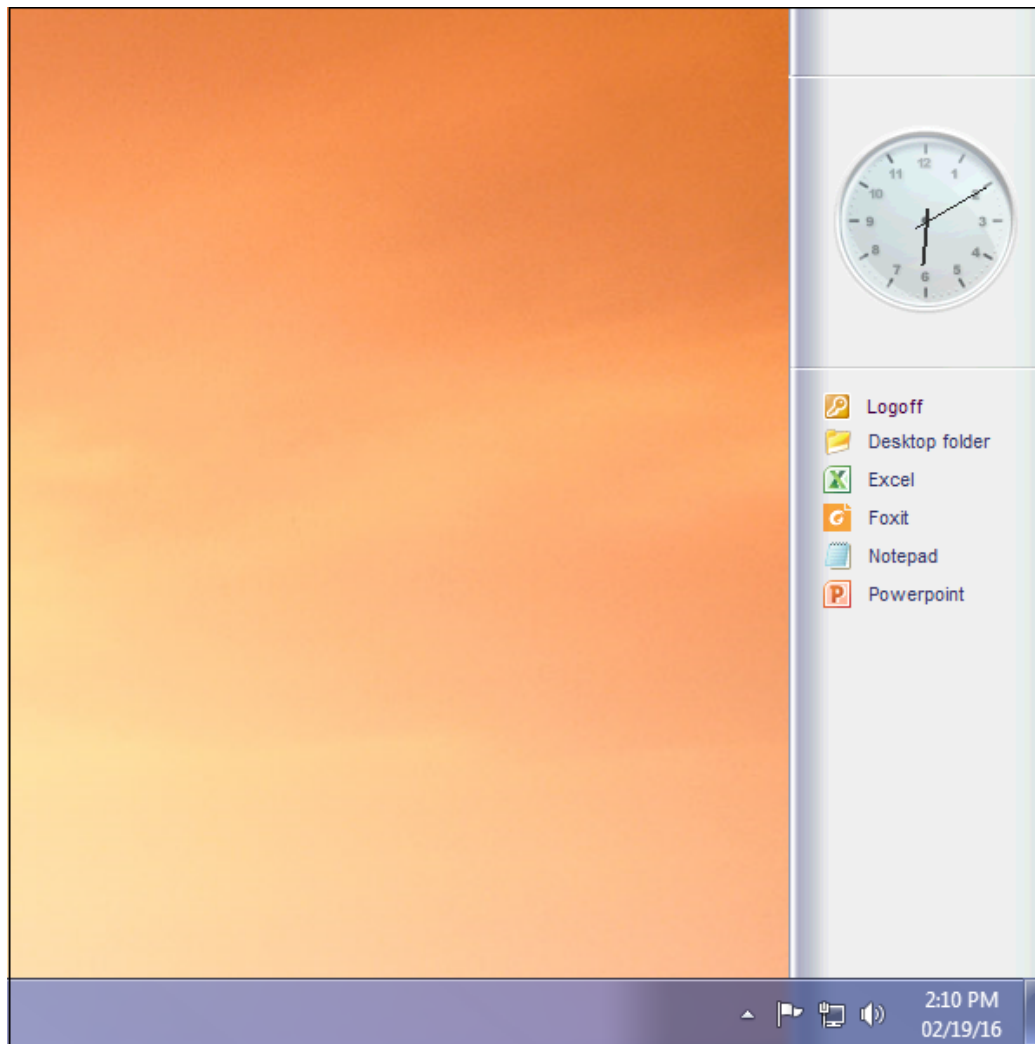
The TSplus Taskbar is extremely useful when a session is run with the Seamless TSplus connection program.

The user can launch remote applications with one click on the TSplus taskbar and still have the full local Desktop available.

### Right-side Blue theme taskbar



**Right-side Silver theme taskbar**



### On Top taskbar



### Overlapping the Windows taskbar with the Seamless connection client

If you want your maximized applications to overlap the Windows taskbar, click on this box, on the Seamless client tab:

### Windows Client Generator

General | Display | Remote Desktop client | Seamless client | Local resources | Program | Security | Load-Balancing

Specify your preferred Seamless Color

☐ Blue    ☐ Pink    ☒ Green (default color)

The Seamless client is based on one transparency color.  
This color must be identical on the server and on the client.

When maximizing a Remote Application

☐ Don't hide the local taskbar  
☒ Overlap the local taskbar

WARNING: The Seamless client is working fine up to W7 or /W2008  
If, your sytem is W10, 2012-R2 or W2016  
Then, use the RemoteApp client instead of the Seamless one

This setting applies only to the Seamless client

Client location:

Client name:



[Back To Top](#)

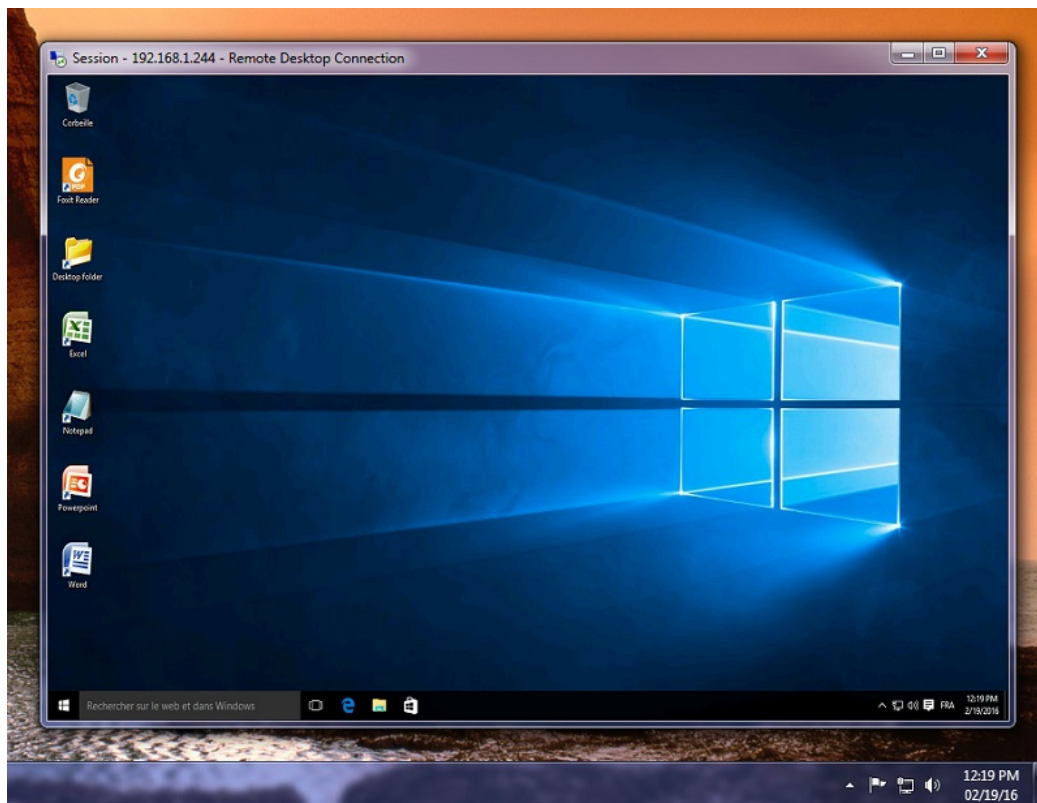
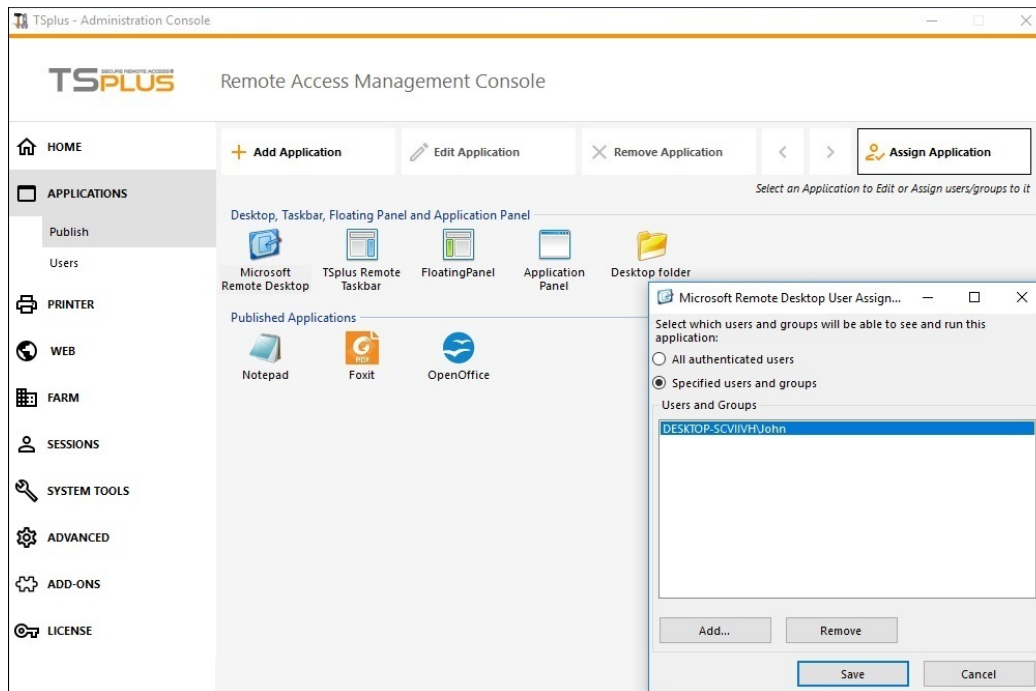
## Thin-client or any RDP based connection program

With the AdminTool, the Administrator can easily decide what will be the default Remote Desktop theme the user will see when opening a session. He has the choice between 4 different styles of full screen Remote Desktop. The standard Microsoft Remote Desktop can also be used if preferred.

Because these TSplus Desktops are full screen desktops, the user's display is entirely filled when a session is opened from dedicated thin-clients, any RDP based client, or accessed from a web page or TSplus Remote Desktop clients.

There are benefits over a standard Remote Desktop. It enhances the server security (no START button neither full control of the Desktop).

### Standard Microsoft Remote Desktop



- The user has a complete desktop including Start Button and full control of the desktop
- To assign to complete desktop, just assign the Microsoft Remote Desktop application.

In order to change the Desktop themes, you will have to assign the TSplus Remote Taskbar and choose between the 3 suggested themes:



Taskbar Theme Preference

Select your preferred TSplus Taskbar theme

☐ Use Blue taskbar theme as default

☐ Use Silver taskbar theme as default

☐ Use OnTop taskbar theme as default

☒ Use Desktop theme one as default

☐ Use Desktop theme two as default

☐ Use Logon theme as default

Application working area within the selected theme

☐ Full screen

☐ Do not overlap the local taskbar

☐ Do not overlap the Blue or Silver bar

Replace logo/wallpaper on the Desktop themes

Minimize buttons Preference

Minimize Buttons preference

☐ Justify left

☐ Center

☒ Justify right

☐ On the screen top

☒ On the screen bottom

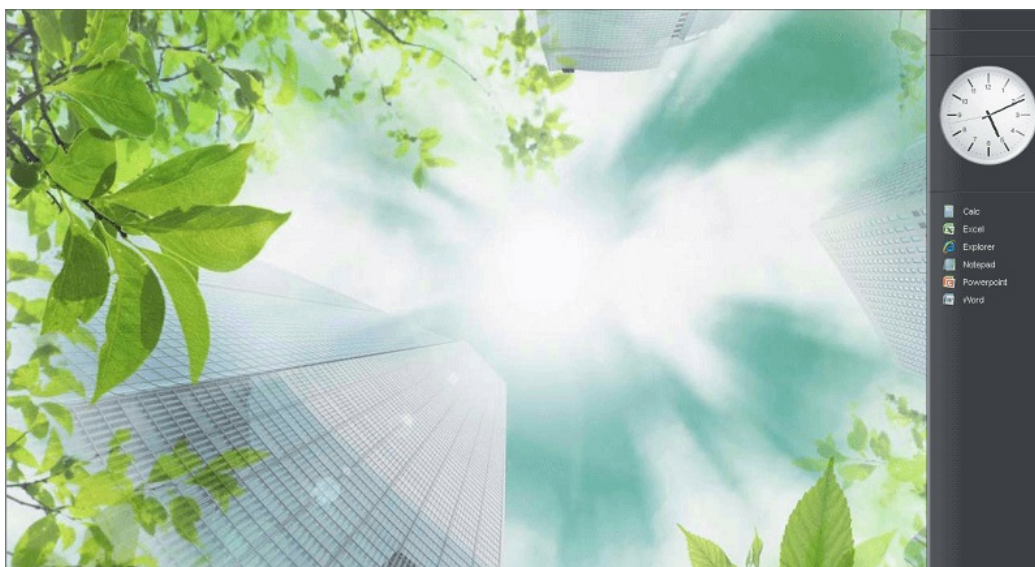
Notification area (Systray) Preference

Show/Hide the Notification Area (Systray)

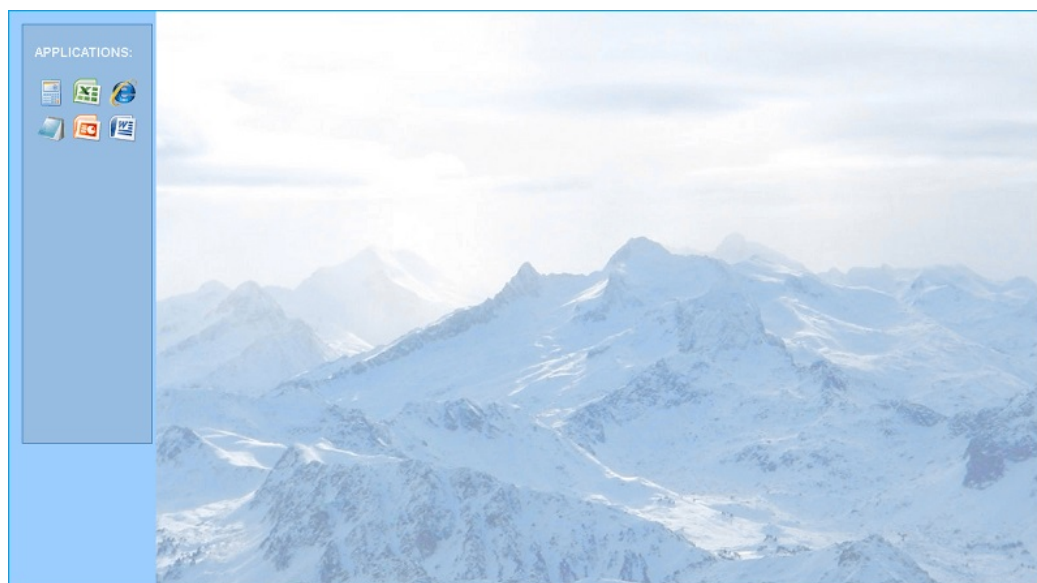
☒ Show the Notification area

☐ Hide the Notification Area

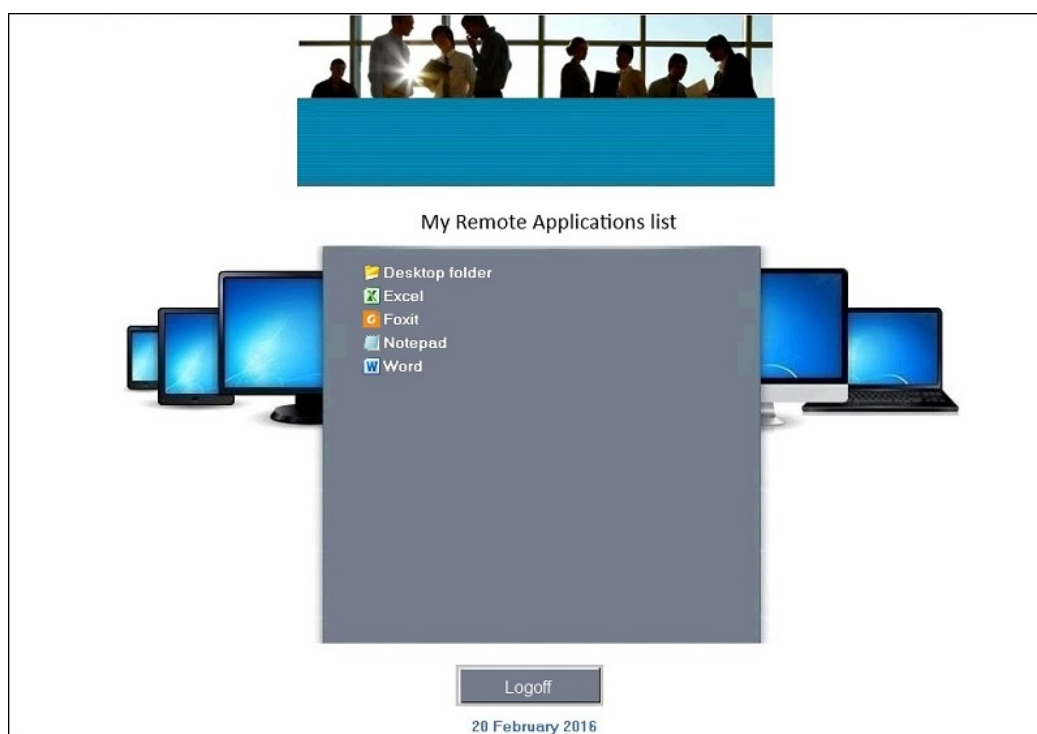
**TSplus Desktop theme one**



**TSplus Desktop theme two**



**TSplus logon theme**



**Customized theme**

For each theme, the Administrator can customize it and for example, display the Corporate logo. He can also add his own Desktop wallpaper by selecting one of the Desktop themes and by clicking on the Replace logo/wallpaper button to select your .jpg file, for example:

### Taskbar Theme Preference

Select your preferred TSplus Taskbar theme

☒ Use Blue taskbar theme as default  
☐ Use Silver taskbar theme as default  
☐ Use OnTop taskbar theme as default  
☐ Use Desktop theme one as default  
☐ Use Desktop theme two as default  
☐ Use Logon theme as default

Application working area within the selected theme

☐ Full screen  
☐ Do not overlap the local taskbar  
☐ Do not overlap the Blue or Silver bar

Replace logo/wallpaper on the Desktop themes

### Minimize buttons Preference

Minimize Buttons preference

☐ Justify left      ☐ Center      ☒ Justify right

☐ On the screen top      ☒ On the screen bottom

### Notification area (Systray) Preference

Show/Hide the Notification Area (Systray)

☒ Show the Notification area      ☐ Hide the Notification Area

- You can add your own Desktop wallpaper by selecting one of the Desktop themes and by clicking on the Replace logo/wallpaper button to select your .jpg file, for example:



