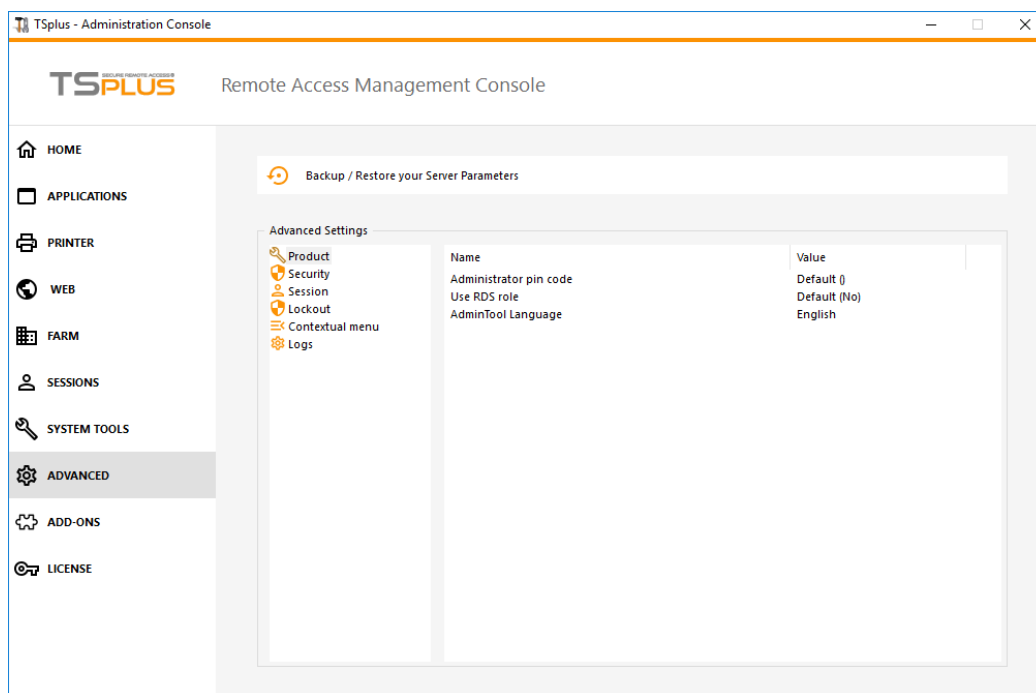


# Advanced Features - Product

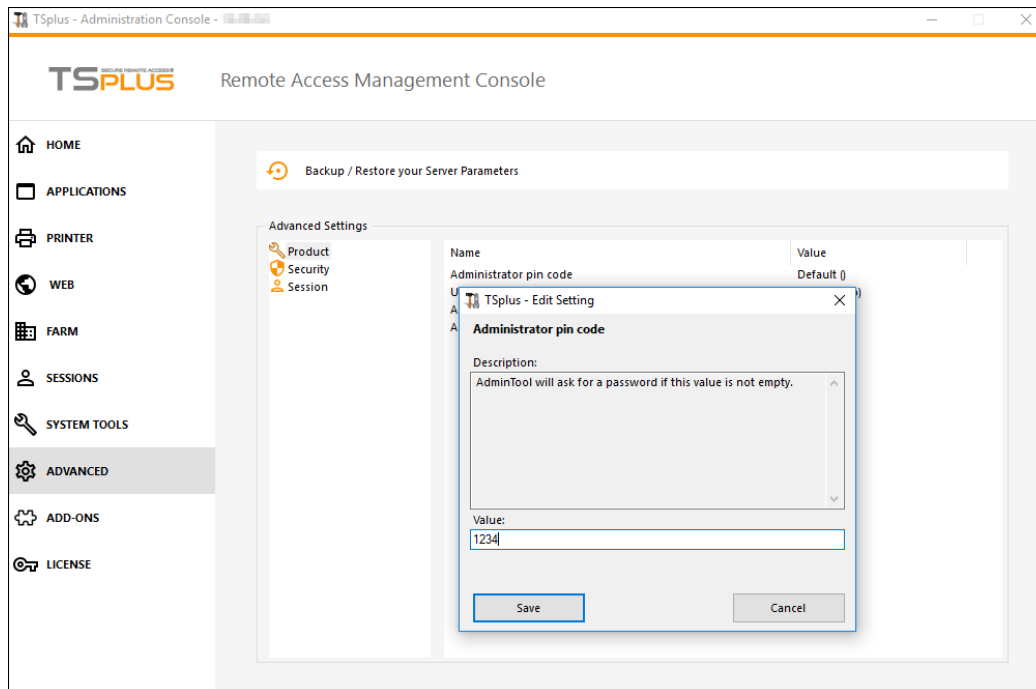
## Overview

On this tab, you can modify TSplus settings by adding an AdminTool Pincode, use the Windows RDS role and customize the background color and language of the AdminTool.



## Administrator Pin Code

The Administrator can secure the Administrator Tool access by setting a pin code which will be asked at every start, on the Advanced tab of the AdminTool, under the Product Settings:

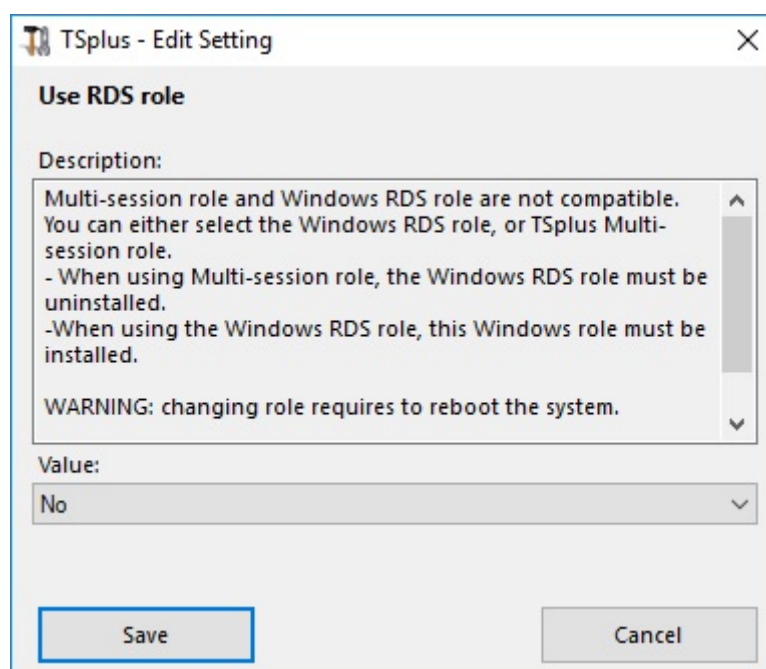


## Use RDS role

Multi-session role and Windows RDS role are not compatible. You can either select the Windows RDS role, or TSplus Multi-session role.

- When using Multi-session role, the Windows RDS role must be uninstalled.
- When using the Windows RDS role, this Windows role must be installed.

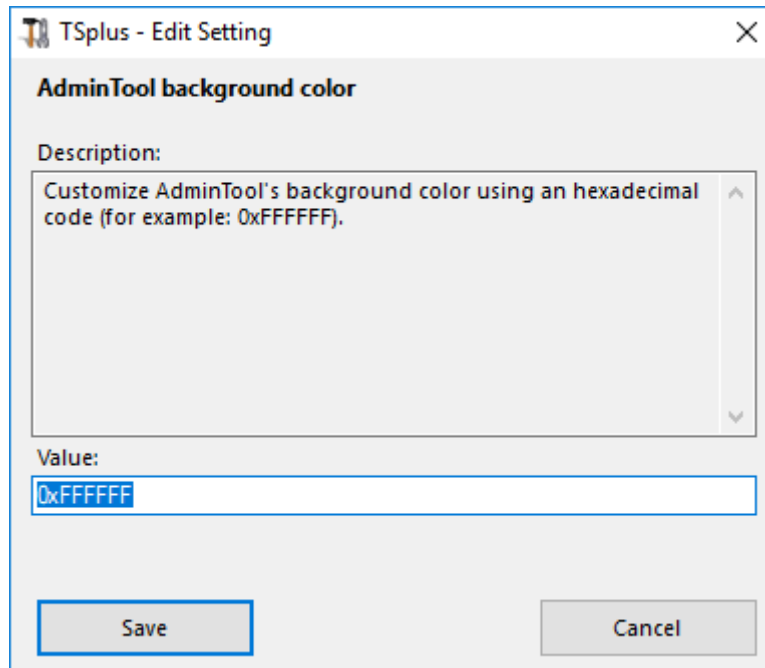
**WARNING:** changing role requires to reboot the system. When selecting the Windows Remote Desktop, only one user at a time will be allowed on a workstation system.



To use the Windows RDS role, select the "Yes" value and Save.

## Modify the AdminTool Background color

Customize AdminTool's background color using an hexadecimal code (for example: 0xFFFFFFFF).



## Modify the AdminTool Language

Select your preferred language for the AdminTool among the 21 available.

