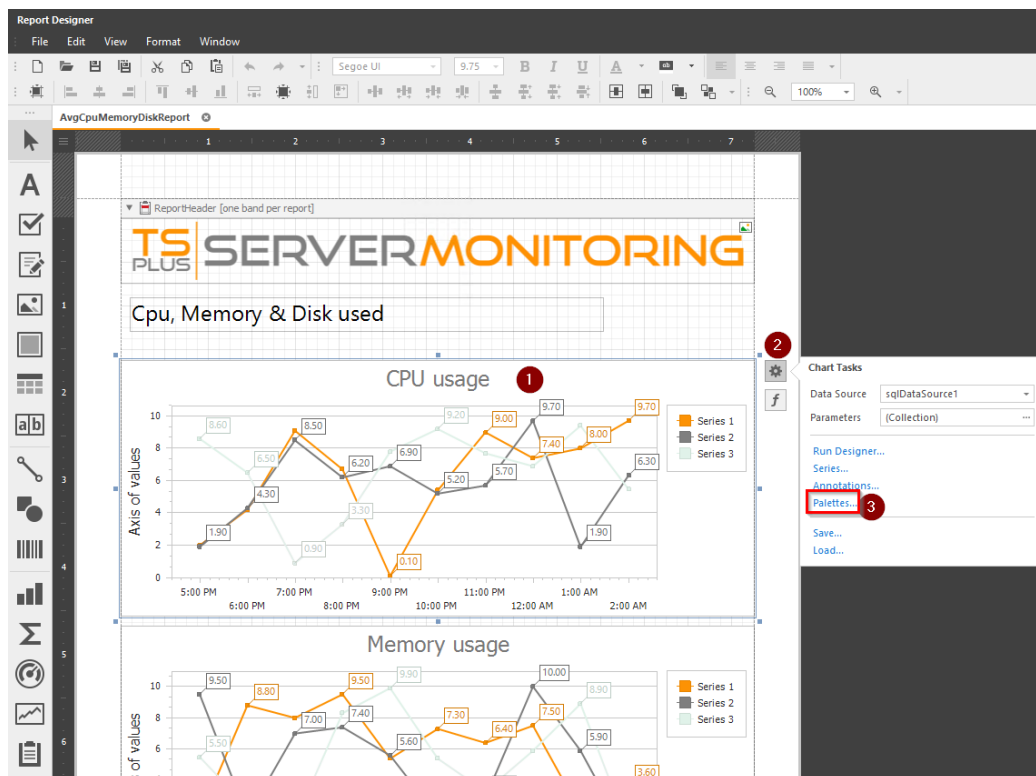


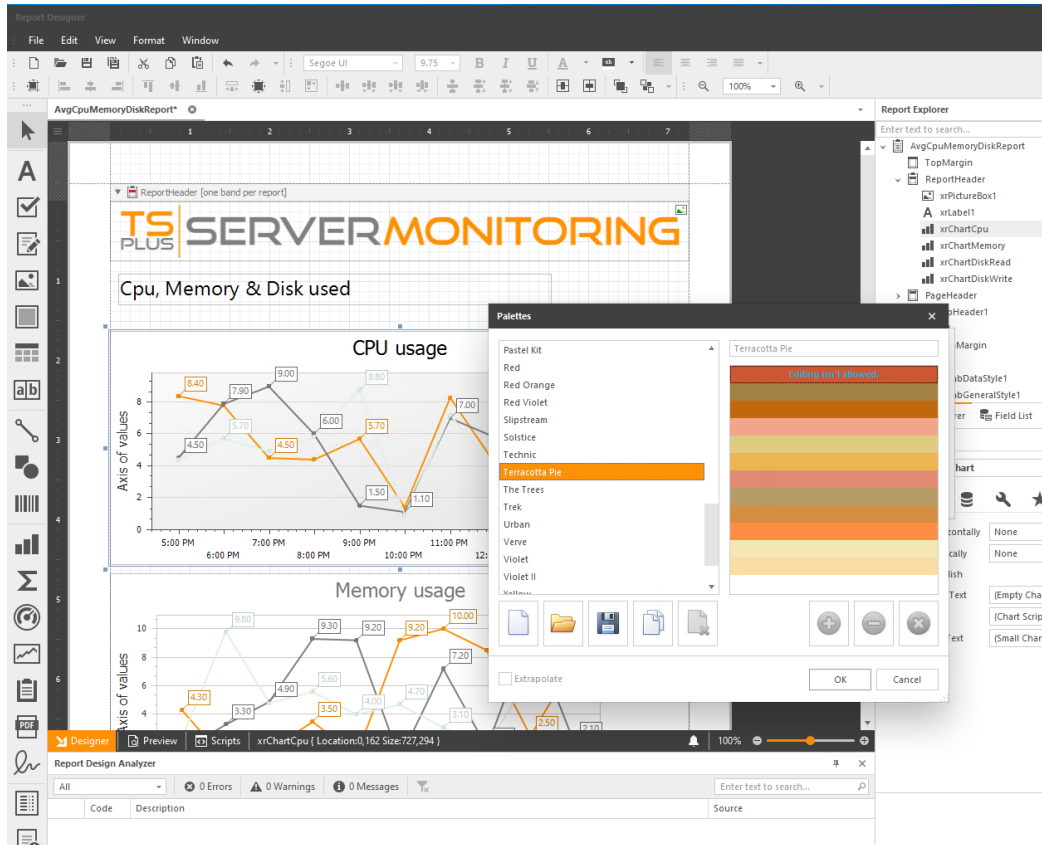
# How to: Change colors of a custom report

If you want to change the colors of series in a graph:

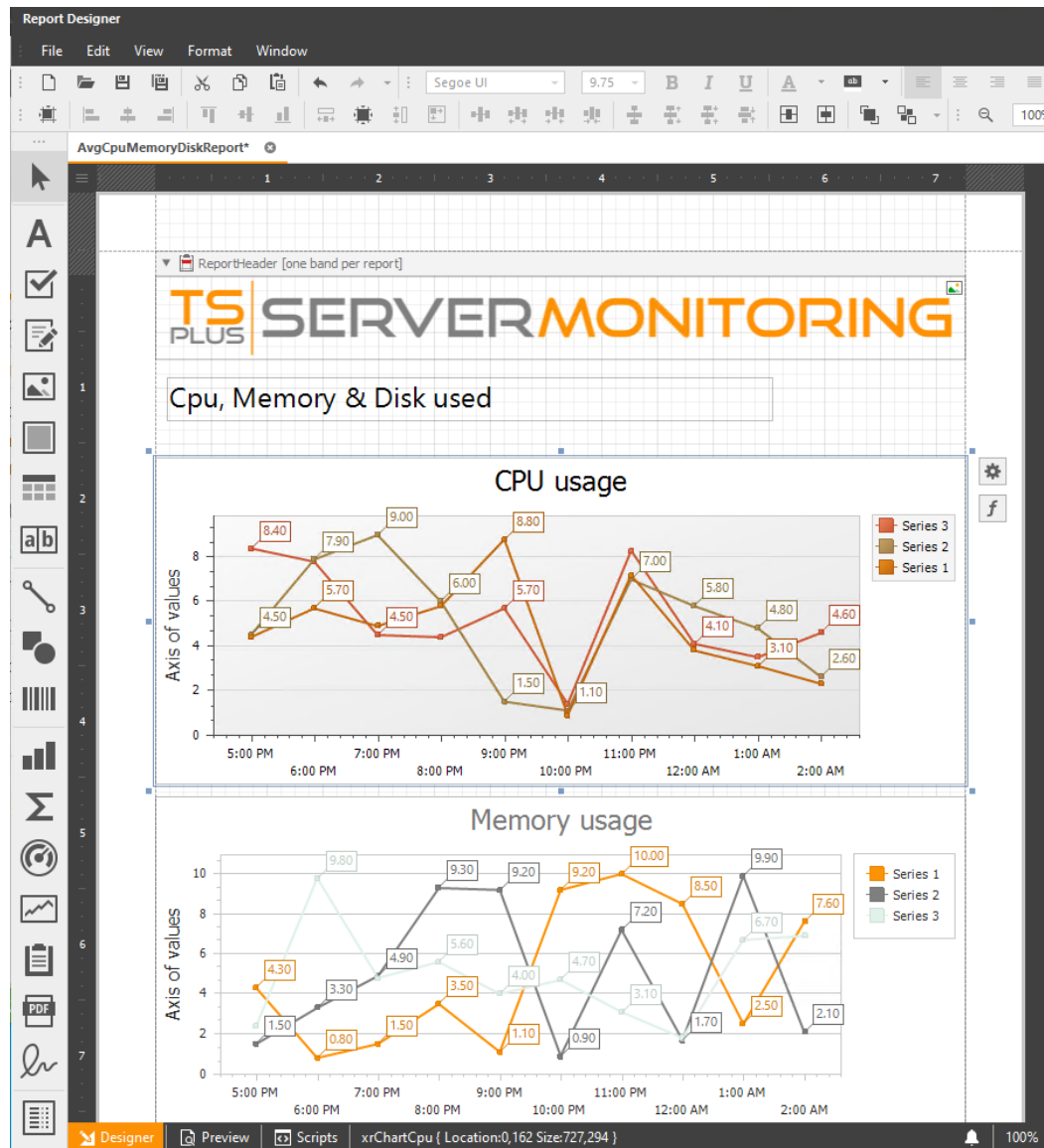
Select the graph you want to change, then click on the **settings** button, and click on **Palettes**:



Then choose an existing palette, or create your own:



Click on OK, and look at the modifications applied:



You also can customize datagrid content (colors, borders, fonts, etc.) You just have to select the cell(s) you want to modify, and modify the properties you want:

