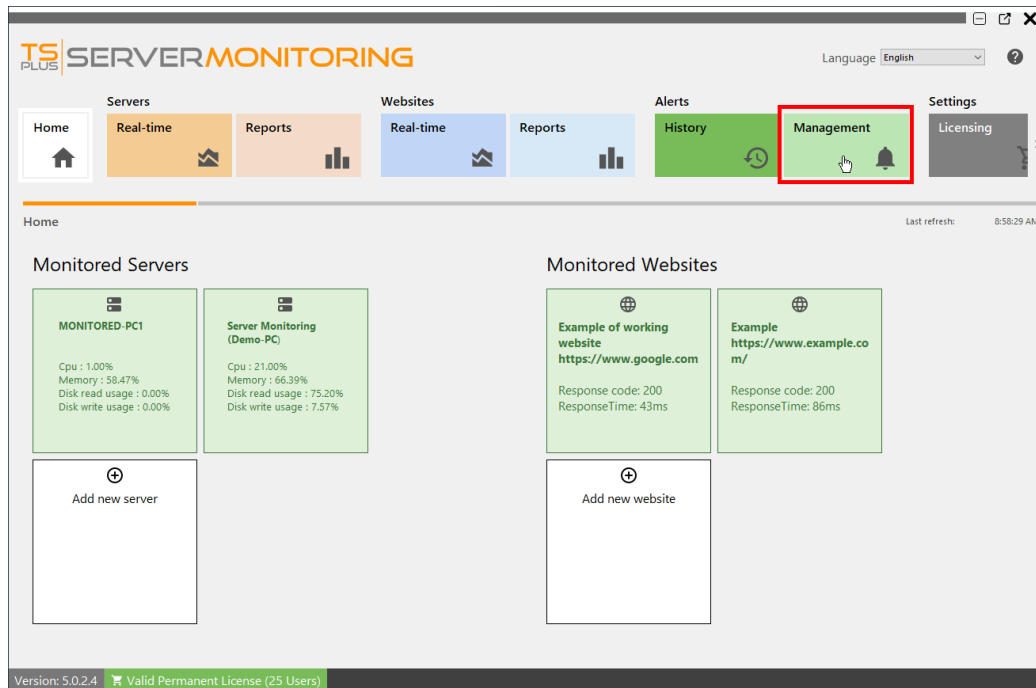
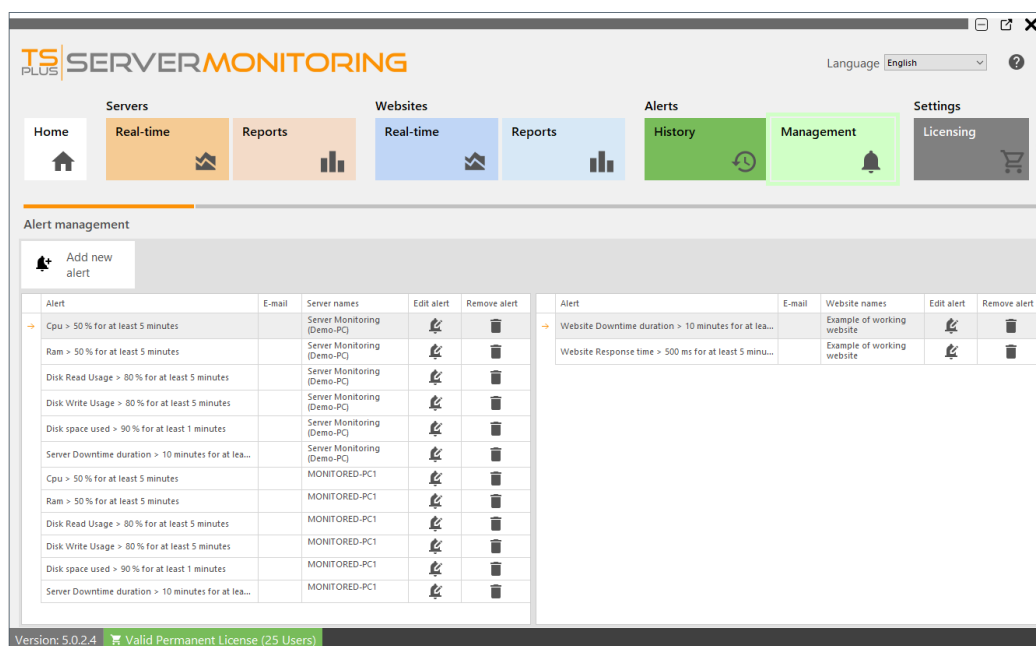


# Alerts Management

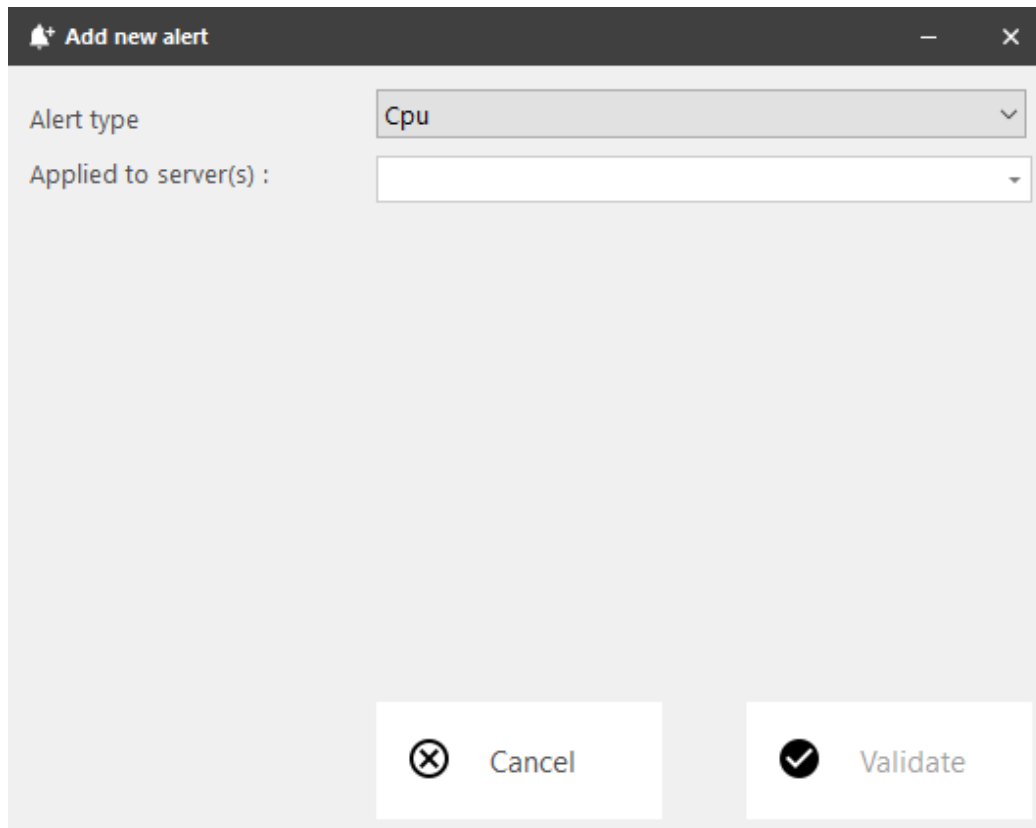
You can access Alerts Management by clicking on the **Management** tile of **Alerts** section on the home page:



When you install an agent on a server to monitor, Server Monitoring will automatically create basic alerts for the server. Creating a new website will also create alerts for the website.



Using the "Add new Alert" button, you can add alerts on your Server Monitoring system.



Alert type: Cpu

Applied to server(s) :

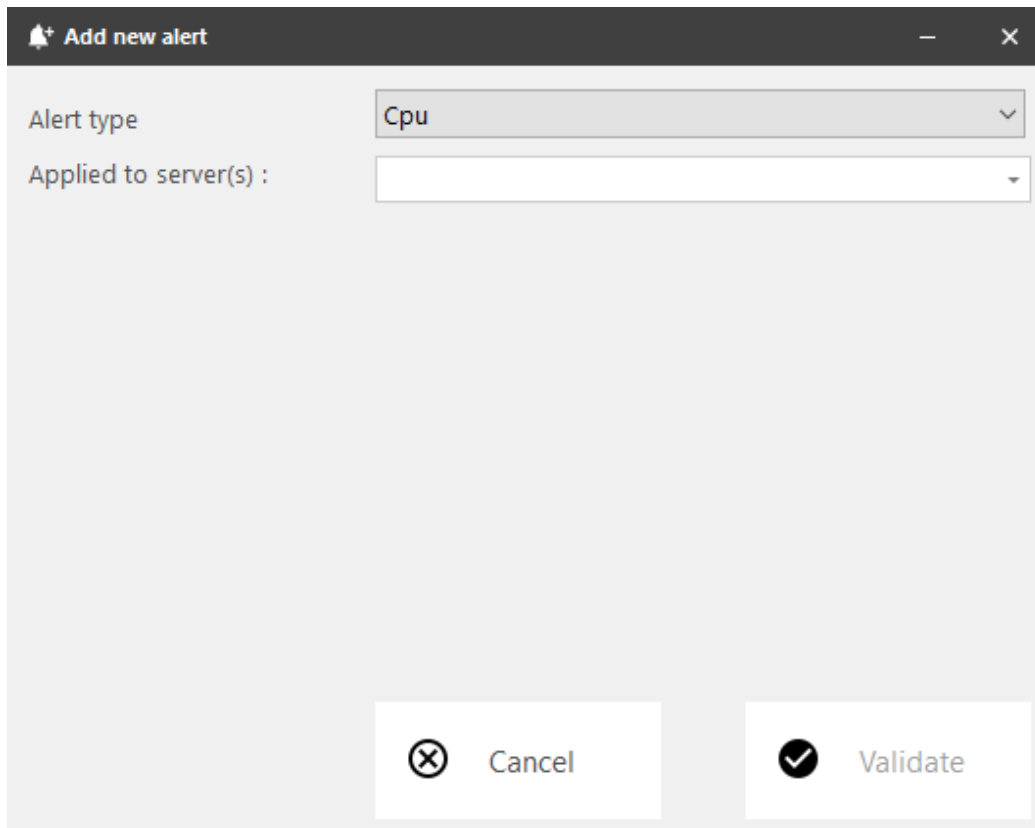
Cancel Validate

For **servers**, alerts can be set for:

- Processor
- Memory
- Disk read/write usage
- Network usage (bytes sent/received)
- Disk used space
- Active Users
- Downtime Duration

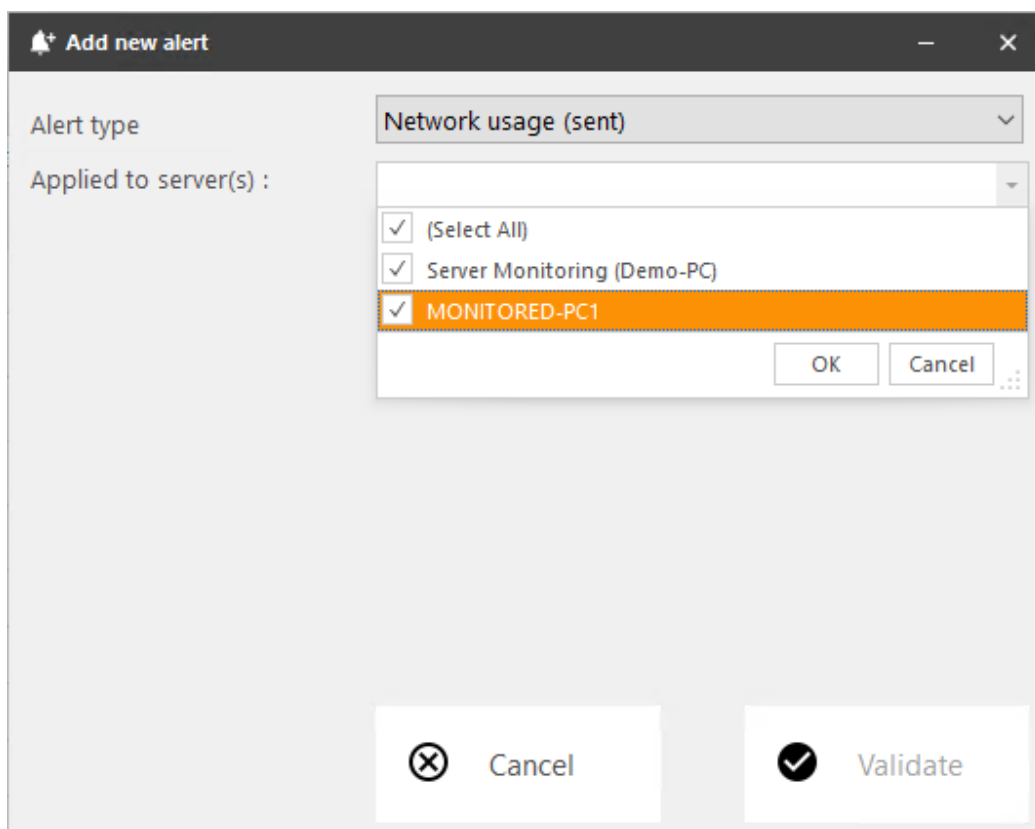
For **websites**, alerts can be set for Response Time or Downtime Duration.

Please select the type of alert you want to create, and the server(s) or website(s) you want to monitor.



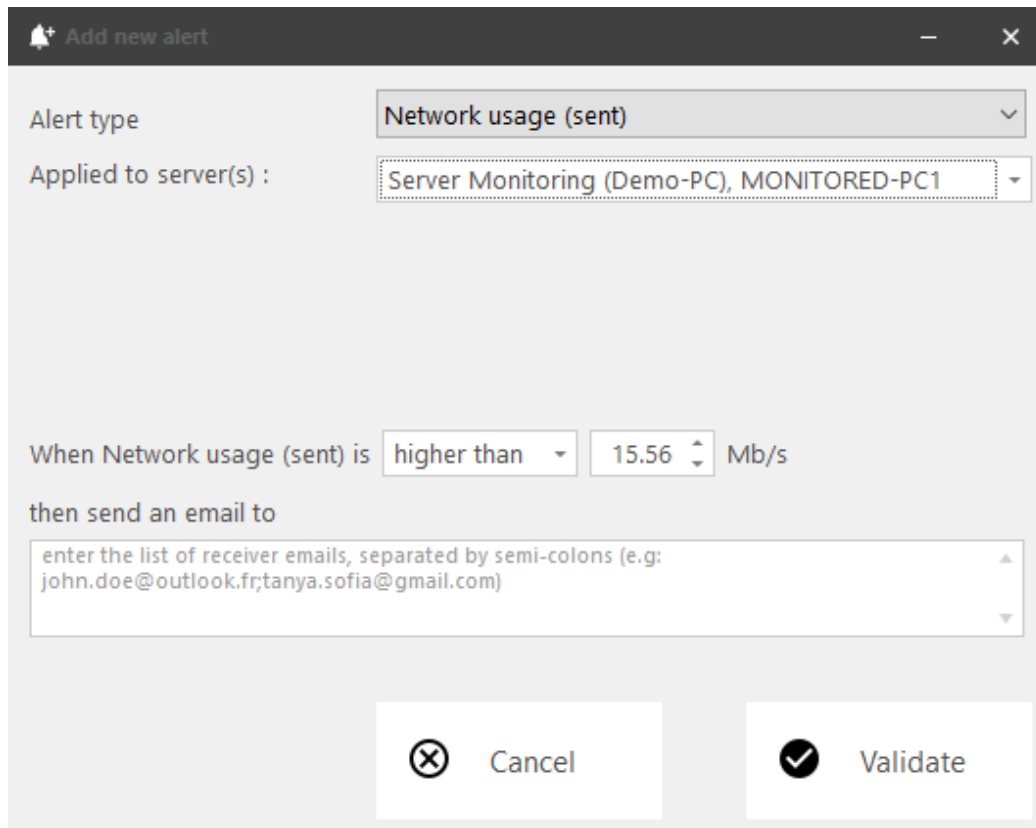
The 'Add new alert' dialog box features a dark header with a bell icon and the title 'Add new alert'. It contains two main input fields: 'Alert type' with a dropdown menu currently showing 'Cpu', and 'Applied to server(s) :' with an empty dropdown menu. At the bottom, there are two buttons: 'Cancel' with a close icon (X) and 'Validate' with a checkmark icon.

Then you can set the alert's parameters :



This image shows the 'Add new alert' dialog box with the 'Alert type' dropdown set to 'Network usage (sent)'. The 'Applied to server(s) :' dropdown is open, displaying a list of servers with checkboxes: '(Select All)', 'Server Monitoring (Demo-PC)', and 'MONITORED-PC1' (which is highlighted in orange). The list has a scrollbar on the right. Below the list are 'OK' and 'Cancel' buttons. The main dialog box still has 'Cancel' and 'Validate' buttons at the bottom.

You can customize the settings with your own values:



The screenshot shows a dialog box titled "Add new alert" with a bell icon and window controls. It contains the following fields and controls:

- Alert type:** A dropdown menu with "Network usage (sent)" selected.
- Applied to server(s):** A dropdown menu with "Server Monitoring (Demo-PC), MONITORED-PC1" selected.
- When Network usage (sent) is:** A dropdown menu with "higher than" selected.
- Value:** A numeric input field with "15.56" and a unit dropdown with "Mb/s" selected.
- then send an email to:** A text area with placeholder text: "enter the list of receiver emails, separated by semi-colons (e.g: john.doe@outlook.fr;tanya.sofia@gmail.com)".
- Buttons:** "Cancel" (with a close icon) and "Validate" (with a checkmark icon).

You can add multiple addresses for alerts to be sent to. If this field is left empty, alerts will still be visible in the alert history of Server Monitoring.

You can also edit or delete an alert, by clicking on the **Edit** or **Remove** buttons.

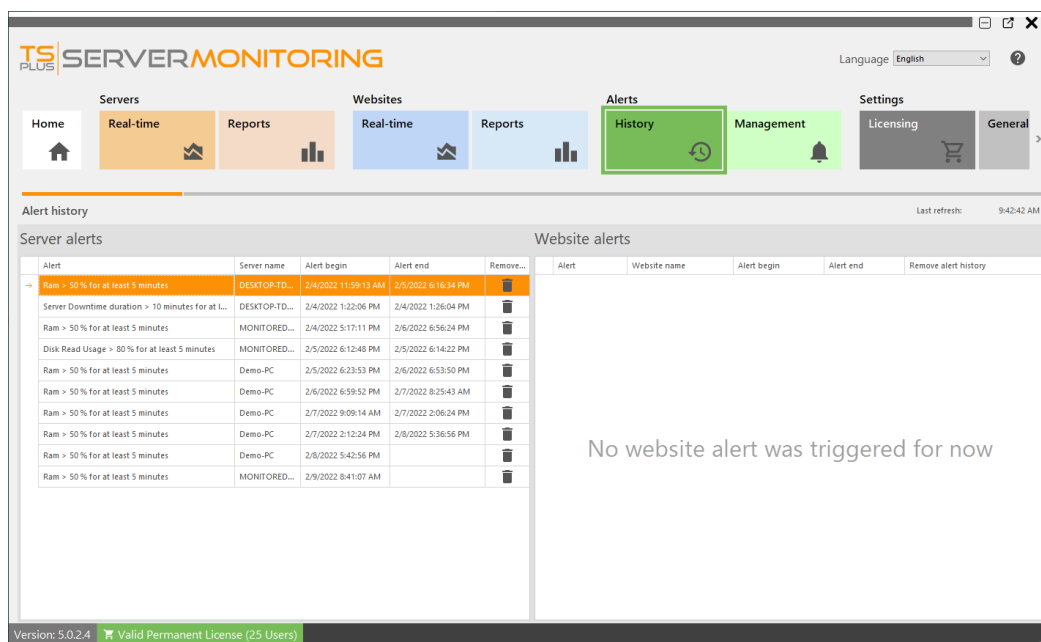
## Notifications

Once you have configured an alert on your server or website, Server Monitoring will closely monitor the chosen metric and send you an email as soon as the targeted threshold is reached or exceeded. Server Monitoring will also send you an email when that metric is back to normal.

You can check historic alerts by clicking on the **History** tile of **Alerts** section on the home page.



You will see a list of alerts triggered, with the title of the alert, the server or website monitored, the beginning of the alert, and its end (if empty, the alert is still triggered).



You can delete one or more lines of history by clicking on the **Remove** button.

[Back To Top](#)