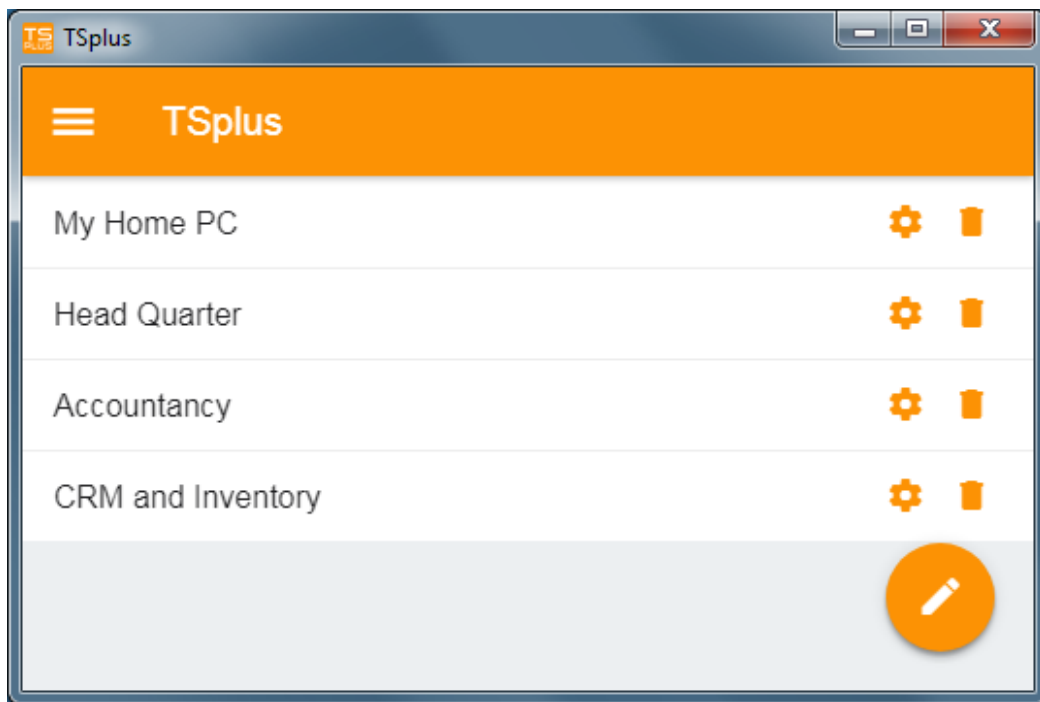


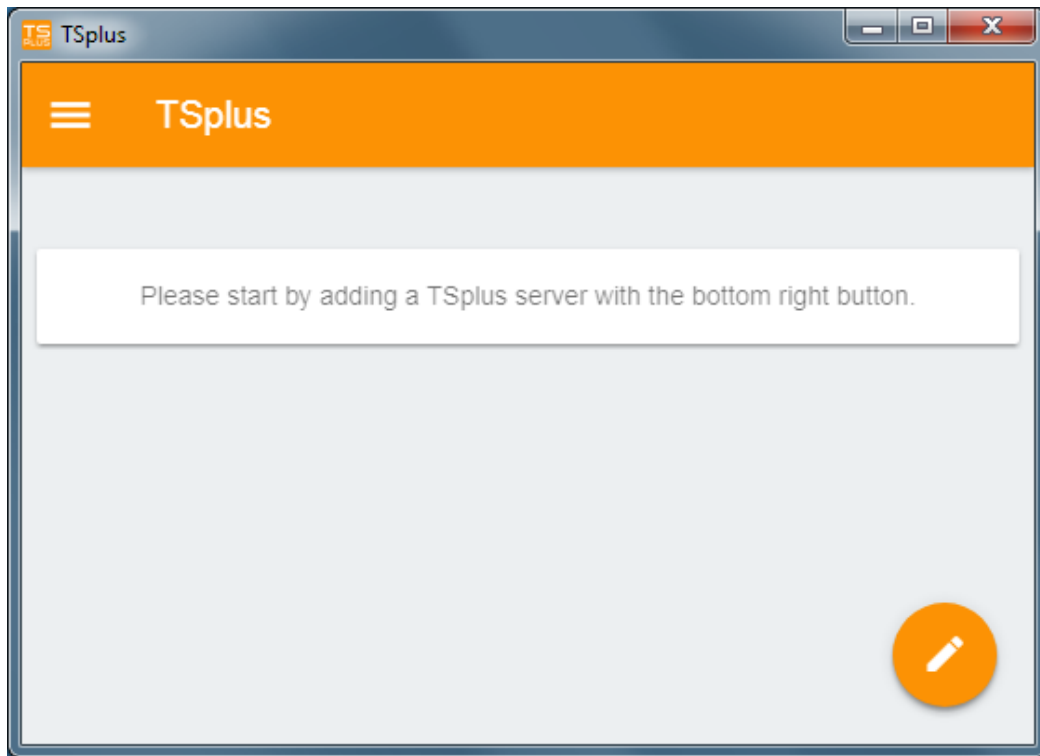
TSplus App Configuration

Manage your servers

The user interface and configuration are simple and intuitive.



First, add a TSplus server by clicking on the bottom right button:



Then, add your server information and configure it:

- Enter its host name or IP address.
- SSL is disabled by default, but you can choose to enable it.

Warning: SSL Activation only works if you installed a valid SSL Certificate on your TSplus server. See [this documentation](#) for more information.

- Enter its display name, which is optional.
- Enter your user's credentials with the domain or user name and its password.

TSplus

← Edit TSplus server

TSPLUS SERVER

Host name or IP address
accountancy.tsplus.net

Use SSL? ☒

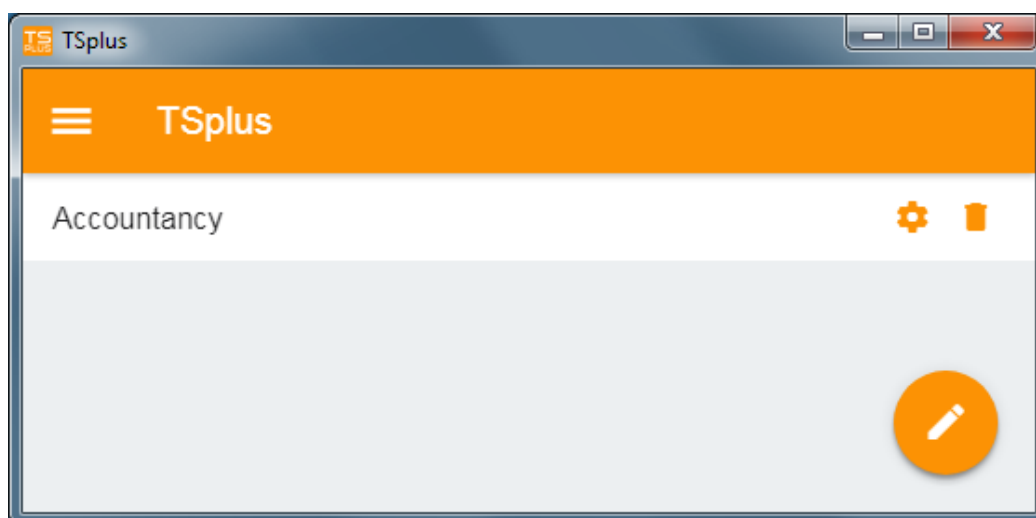
Display name (optional)
Accountancy

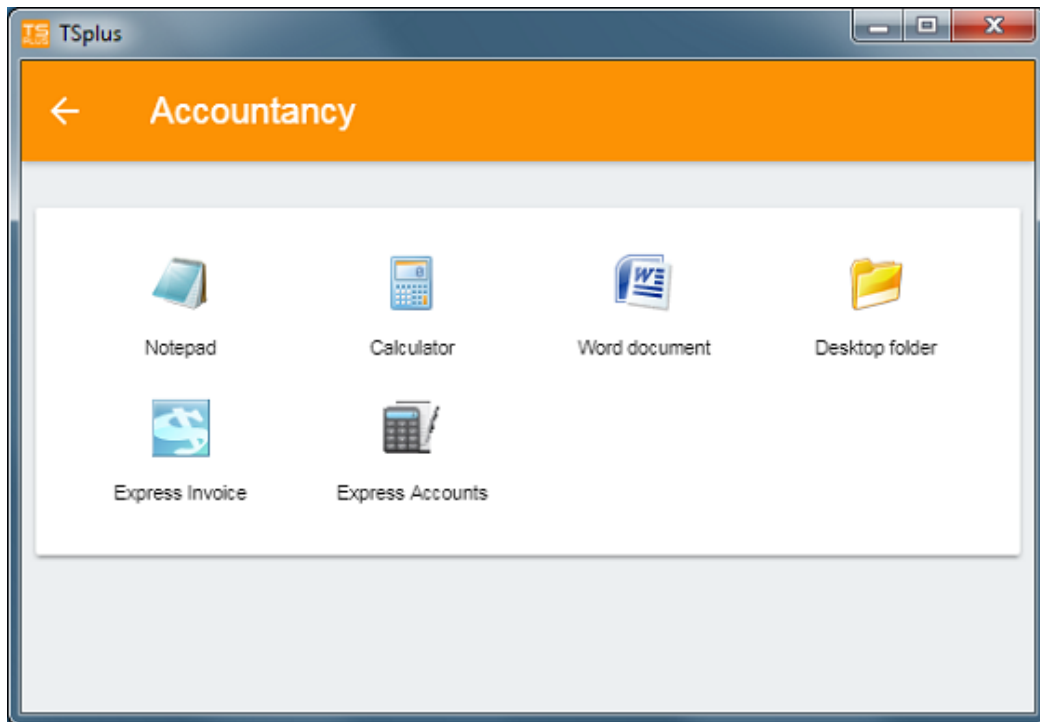
CREDENTIALS

Domainusername
John

Password

Then click on the top right button to save. You can now click on your server to access your applications:





Printing

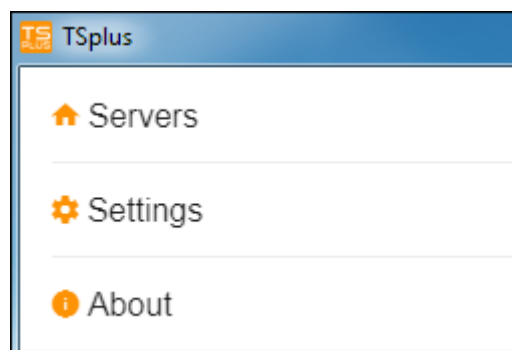
Easily print on your local printer by using the [Universal Printer](#).

Since TSplus App 11.40 version, printed documents open with the default PDF reader app.

Settings and Version

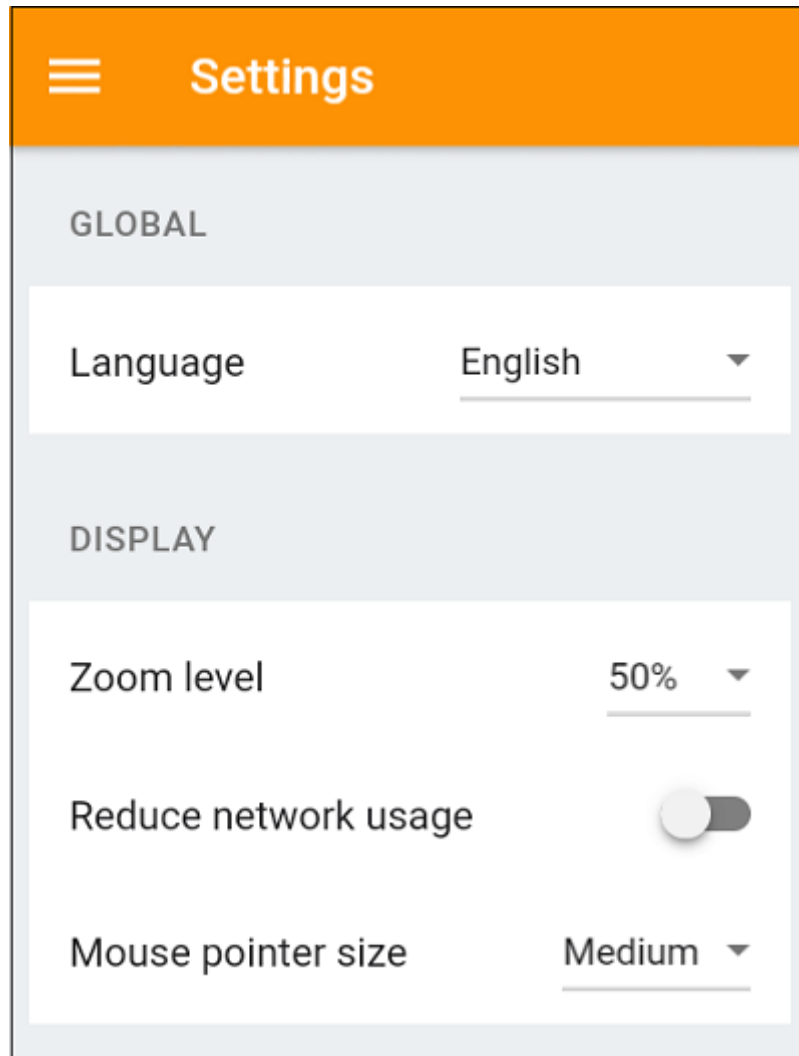
Under the top left menu, you can:

- Manage your servers
- Manage your settings
- See the legal information on the About section, and your TSplus App version.



Settings

Various settings are available on the Settings window:



- You can change the language.
- Modify the display settings by changing the zoom level at your convenience, reduce network usage or choose between 3 mouse pointer sizes: small, medium or large.

Version

On the About window, you can see the legal information as well as your current TSplus App version :

