

# Load Balancing

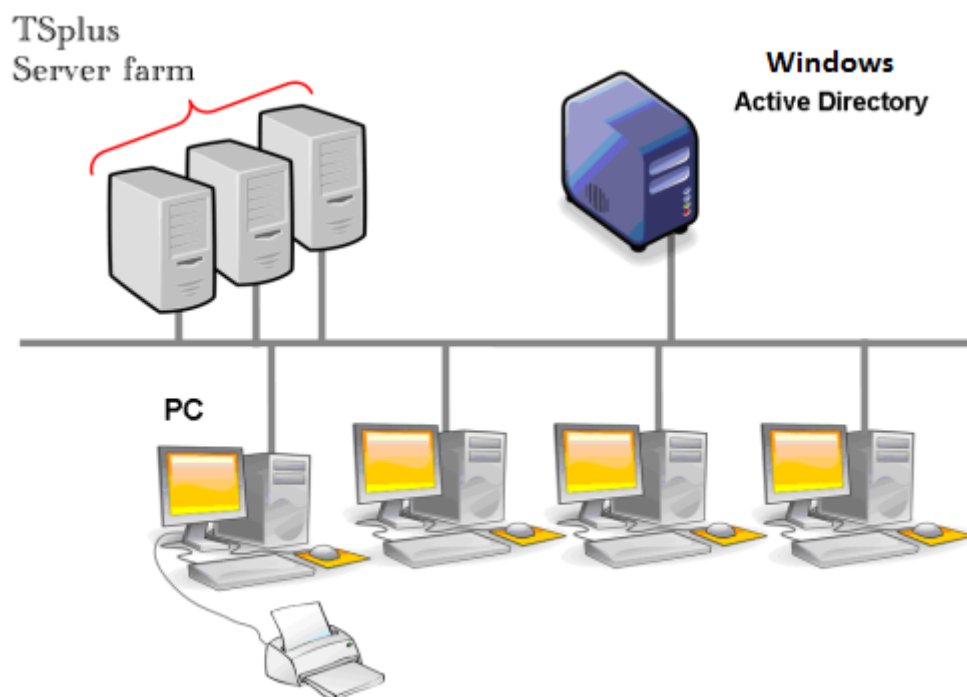
## Pre-requisites

Using this feature, you will be able to manage a load balanced environment.

It means that the load of all your users will be distributed between your servers. The workload will be shared between all the servers of your farm.

Load Balancing enables to use an unlimited number of servers with load balancing, and is available with the Enterprise edition (one valid license per server). This very powerful and advanced capability is to be used when a large number of users/servers has to be deployed.

**Important :** Simply enabling Load Balancing will redirect users to the least loaded server of the farm regardless of any assigned servers configured for the users. If you intent to use Load Balancing AND Server Assignment, make sure to tick the checkbox "Load balance on assigned servers"



Usually we recommend using one server for 50 concurrent users. For standard commercial application written in VB, C, C++, Delphi or Uniface you can go up to 100 concurrent users.

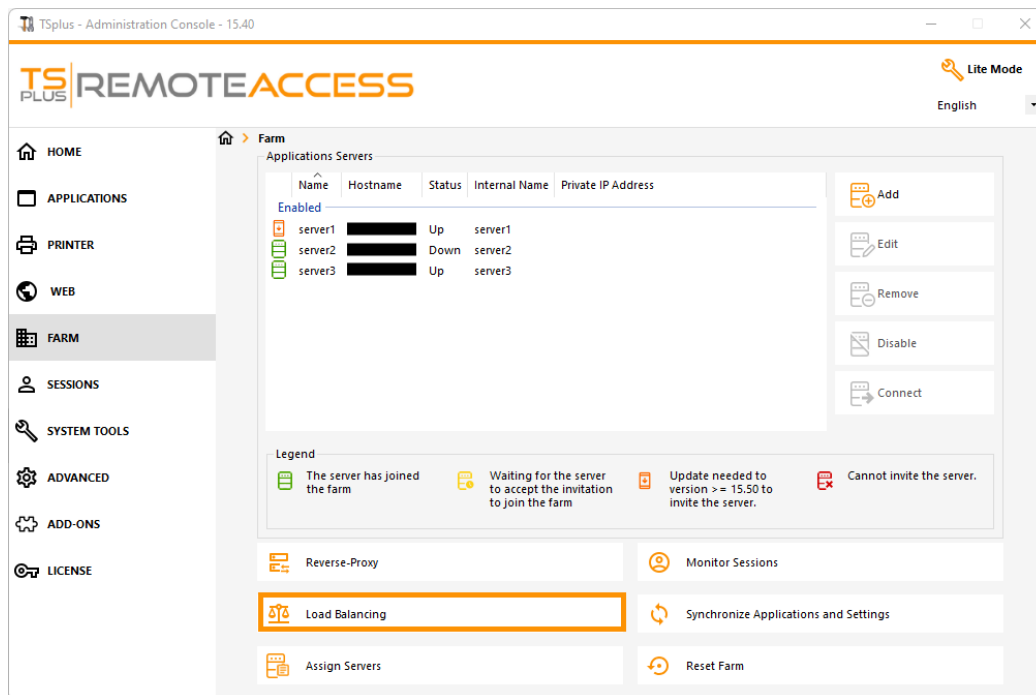
## Generated Clients and Web Access

There are three ways to connect to a Load Balanced cluster:

- Using a **Generated Client** (executable program, created by the [Portable Client Generator](#))
- Using a **Web Portal Access** by activating it on the Web Portal Preferences window.
- With the [TSplus App](#) from your mobile device.

## Load Balancing Main Window

The Load Balancing Manager can be found under the Farm Tab of the AdminTool:



This window allows you to configure Load Balancing. It lists all the servers in your Load Balanced server farm and allows you to enable, disable and configure the Load Balancing (more on this below).

Click on the buttons in the picture below to access the corresponding information:

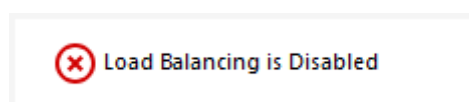
Load Balancing type unknown

## Enabling/Disabling Load Balancing

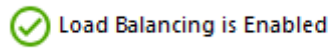
On top of the Load Balancing window, you will see a big button:

- This button displays the current state of the Load Balancing.
- If you click on it, it will enable or disable the Load Balancing depending on its current state.

Here is the button when the Load Balancing is **Disabled**. A click on it will activate it.



Here is the button when the Load Balancing is **Enabled**. A click on it will deactivate it.



## How does Load Balancing choose a server?

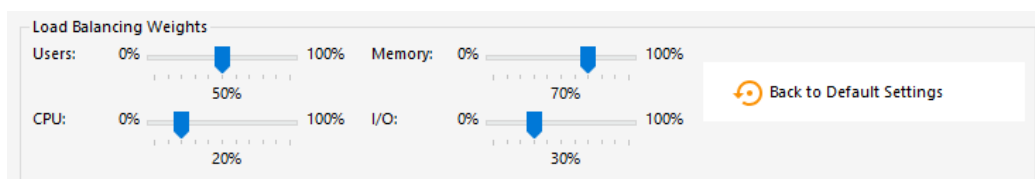
When Load Balancing is enabled, the user will be sent to the less loaded server at the time of his connection.

## Configuring the Computation of Servers' Loads

To determinate which is the less loaded server, the load of every server is computed using a weighted average between several performance indicators:

- number of connected users
- processor usage
- memory usage
- disk usage

You can modify the weight (importance) of these indicators by using the following sliders:



Using these sliders, you will be able to fine-tune the Load Balancing, and to optimize it to your own needs. For instance if your users launch a business application with big memory requirements, it might be a good idea to increase the impact of the RAM in the load computation using the "Memory" slider.

You can also reset these values by clicking on the "Back to Default Settings" button.

## How is Server's Load computed?

The load of each server is computed when needed in order to decide on which server the user must be sent.

For this computation, we use a **weighted average** between 4 hardware metrics.

The 4 sliders allow you to give more (or less) weight on each of these metrics, which are:

- Users : number of connected users
- CPU : percentage of non-idle processor time
- Memory : percentage of used memory
- I/O : percentage of non-idle disk time

For example, if you put the "Memory" slider on its right side and all the other sliders on their left side, the load of each servers will be computed using almost only the percentage of used memory - and your users will be sent to the server having the most available memory.

- When a slider is completely on the left, the weight used in load computation will be 1.
- When a slider is completely on the right, the weight used in load computation will be 100.

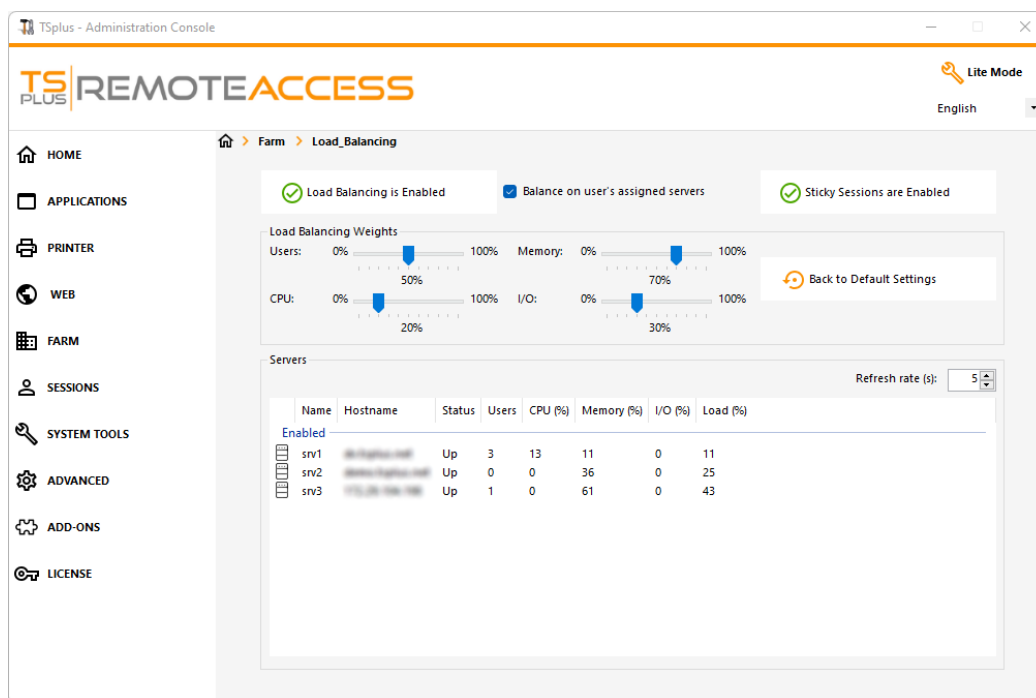
Moreover, the load of a given server depends on the ratio [ used resources / total resources ] ; so if a server A is twice as powerful as a server B, twice more users should be sent to server A than to server B (all other things being equals).

## Servers

You can see the list of Load-Balanced Servers Status and details on the performances indicators of each server.

The servers are sorted from the less loaded to the most loaded according to your configuration.

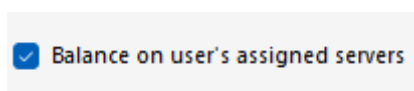
The list of Load-Balanced Servers Status is automatically refreshed. This automatic refresh stops if the connection becomes unavailable. You can change the refresh rate at the top right corner of the "Server" box.



## Load-balance only on user's assigned servers

Load-balancing can also be done directly on user's assigned server using the **checkbox "Balance on user's assigned servers"**.

As a result, you will be able to load-balance on accounting department servers only for accountant users, once these specific servers have been assigned to the accountant users.



## Activate the sticky session feature

You can activate the sticky session feature by clicking on the right button of the Load balancing window:

### Activate the sticky session feature

You can activate the sticky session feature by clicking on the right button of the Load balancing window:

A rectangular button with a green checkmark icon on the left and the text "Sticky Sessions are Enabled" on the right.

It will allow you to reconnect to a disconnected session instead of opening a new session on a different server.

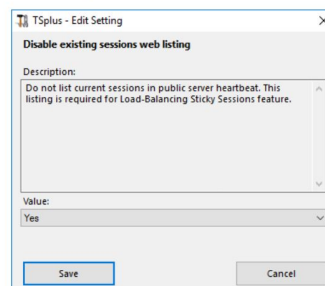
Enabling **existing sessions web listing** is required for Load Balancing Sticky Sessions feature.

It will allow you to reconnect to a disconnected session instead of opening a new session on a different server.

<https://docs.terminalserviceplus.com/tsplus-lts-16/advanced-features-security>

### Disable existing sessions web listing

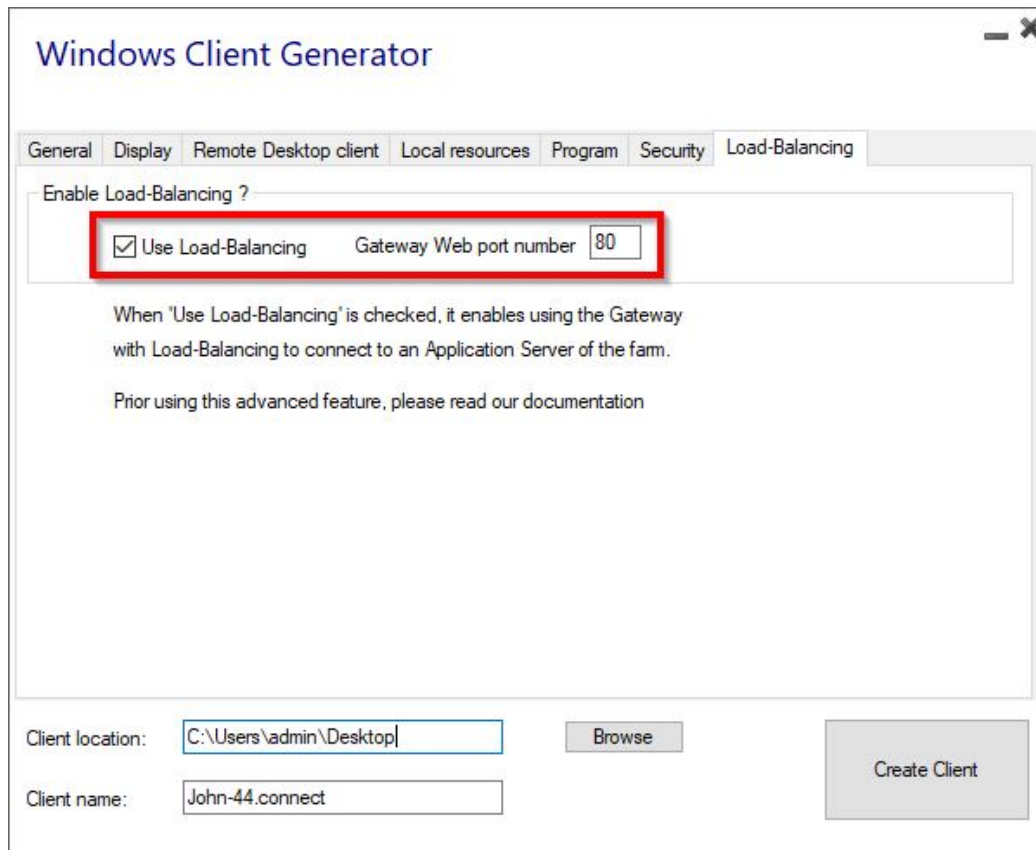
This listing is required for Load-Balancing Sticky Sessions feature and is enabled by default. If you wish to disable it, select the "No" value on this window, then click on save:



## Load Balancing using a Connection Client

If you want to generate a [Connection Client](#) for a user to connect to the less loaded server, you will need from the *Client Generator* in the "Load-Balancing" tab to:

- Check the "Use Load-Balancing" checkbox
- Fill in the "Gateway Web port number" field with the HTTP or HTTPS port used by your Gateway Server



The screenshot shows the 'Windows Client Generator' window with the 'Load-Balancing' tab selected. A red rectangle highlights the 'Use Load-Balancing' checkbox, which is checked, and the 'Gateway Web port number' field, which contains the value '80'. Below this, there is explanatory text: 'When "Use Load-Balancing" is checked, it enables using the Gateway with Load-Balancing to connect to an Application Server of the fam.' and 'Prior using this advanced feature, please read our documentation'. At the bottom, the 'Client location' is 'C:\Users\admin\Desktop', 'Client name' is 'John-44.connect', and there are 'Browse' and 'Create Client' buttons.

Windows Client Generator

General Display Remote Desktop client Local resources Program Security Load-Balancing

Enable Load-Balancing ?

☒ Use Load-Balancing Gateway Web port number 80

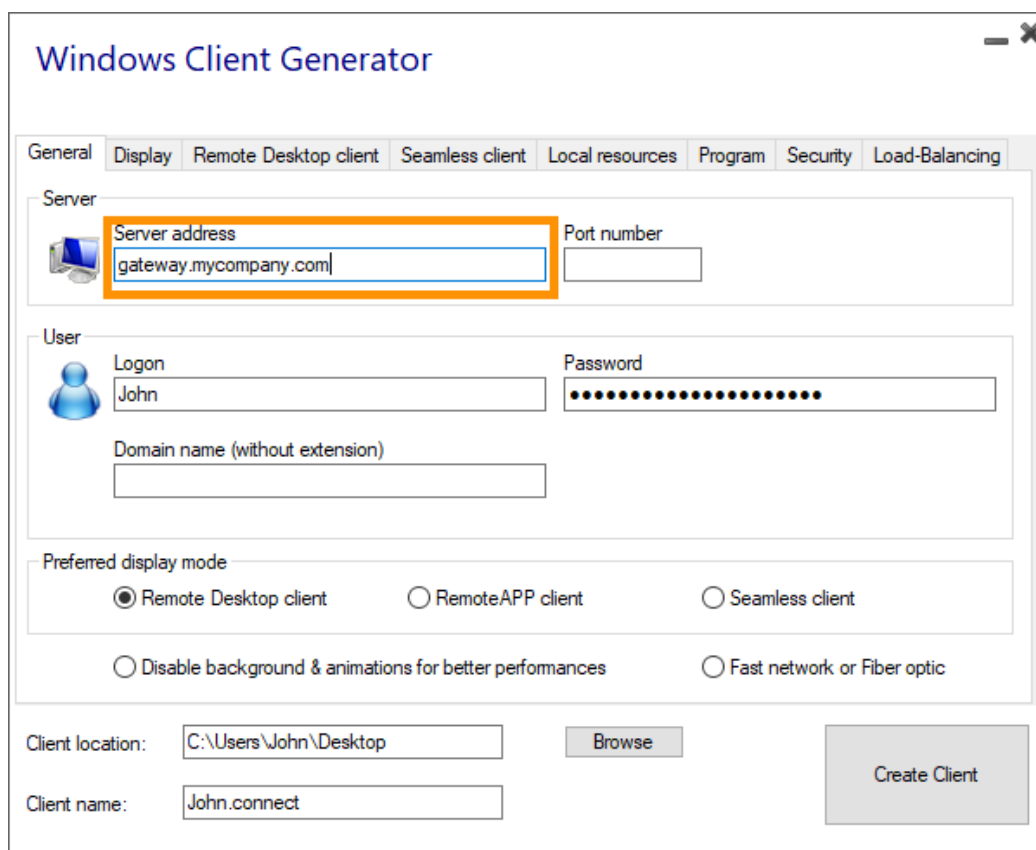
When "Use Load-Balancing" is checked, it enables using the Gateway with Load-Balancing to connect to an Application Server of the fam.

Prior using this advanced feature, please read our documentation

Client location: C:\Users\admin\Desktop Browse

Client name: John-44.connect Create Client

- Use the public IP address or hostname of your Gateway Server directly in the "Server" field.



The screenshot shows the 'Windows Client Generator' window with the 'General' tab selected. The 'Server' section has 'Server address' set to 'gateway.mycompany.com' and 'Port number' is empty. The 'User' section has 'Logon' set to 'John' and 'Password' is masked with dots. The 'Domain name (without extension)' field is empty. Under 'Preferred display mode', 'Remote Desktop client' is selected. At the bottom, 'Client location' is 'C:\Users\John\Desktop', 'Client name' is 'John.connect', and there are 'Browse' and 'Create Client' buttons.

Windows Client Generator

General Display Remote Desktop client Seamless client Local resources Program Security Load-Balancing

Server

Server address gateway.mycompany.com Port number

User

Logon John Password

Domain name (without extension)

Preferred display mode

☒ Remote Desktop client ☐ RemoteAPP client ☐ Seamless client

☐ Disable background & animations for better performances ☐ Fast network or Fiber optic

Client location: C:\Users\John\Desktop Browse

Client name: John.connect Create Client