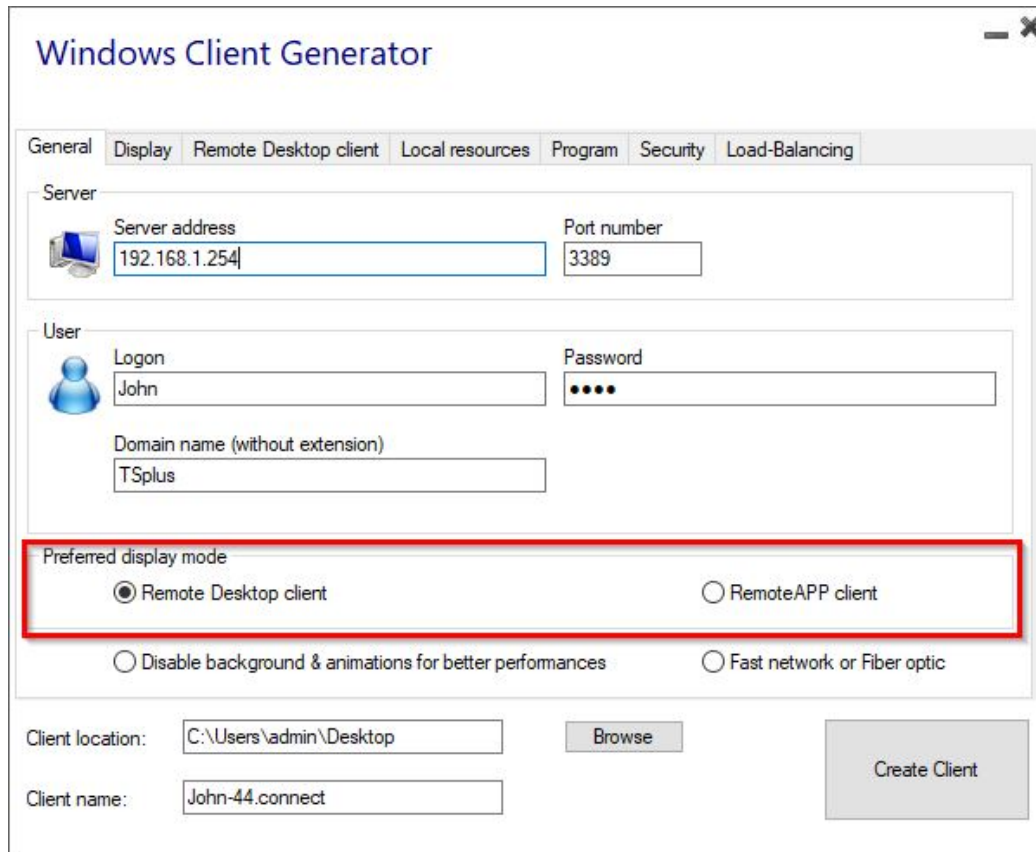


RemoteApp Connection Client

You can choose between 2 display modes on the general tab of the client generator:



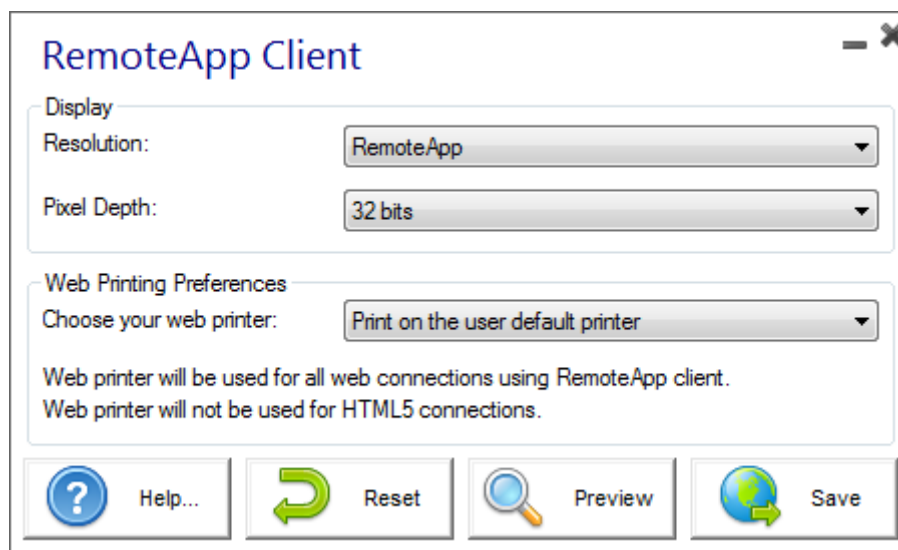
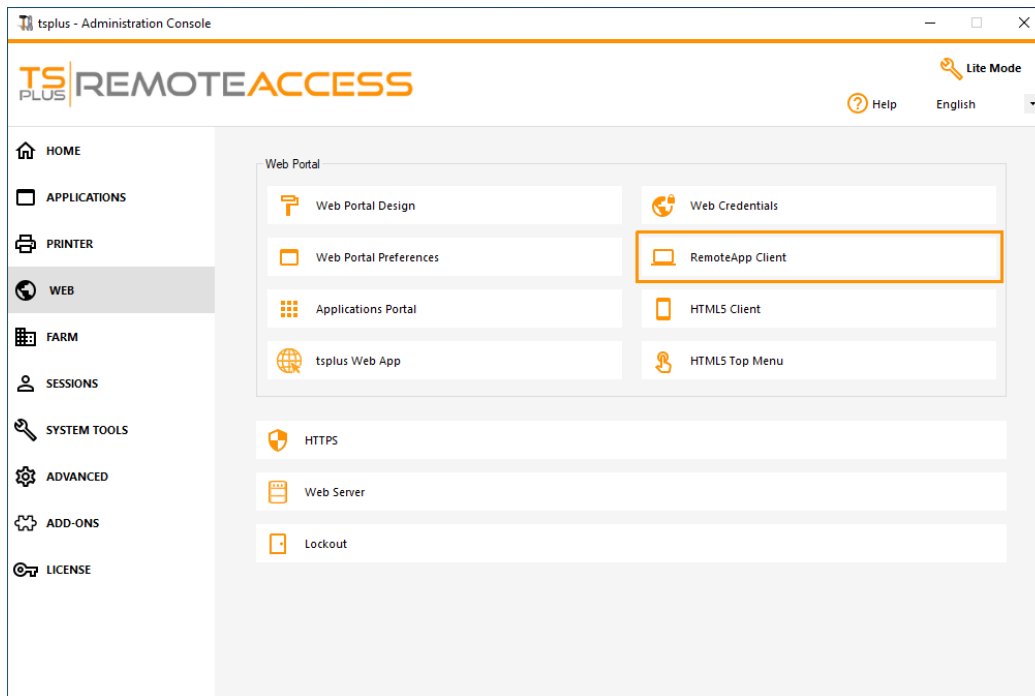
The screenshot shows the 'Windows Client Generator' window with the 'General' tab selected. The 'Server' section contains 'Server address' (192.168.1.254) and 'Port number' (3389). The 'User' section contains 'Logon' (John), 'Password' (masked with dots), and 'Domain name (without extension)' (TSplus). The 'Preferred display mode' section is highlighted with a red box and contains two radio buttons: 'Remote Desktop client' (selected) and 'RemoteAPP client' (unselected). Below this are two more radio buttons: 'Disable background & animations for better performances' and 'Fast network or Fiber optic'. The 'Client location' is 'C:\Users\admin\Desktop' and the 'Client name' is 'John-44.connect'. A 'Create Client' button is at the bottom right.

RemoteApp connection client

The RemoteApp connection client does not depend on the transparency color settings. This allows for perfect application display as well as native Windows behavior.

- On the Client side, the installation of RDP6 or above is required.
- On the Server side, TSplus must be installed on a machine running Windows 7 to Windows Server 2019.
Note: RemoteApp is not supported on Windows 10 1803 et 1809 Home Windows 2019 Essentials Editions.

You can change the RemoteApp client display and Printing preferences on the Web tab of the Admintool:



Minimized applications can be found directly inside the Windows taskbar, like a local application. In this example, Firefox and Paint are launched locally; Notepad, Word and Foxit are launched remotely.



For the Remoteapp connection client, you can choose to publish one unique application to be launched seamlessly at the user's login. You can also publish applications with the [TSplus Remote Taskbar](#), [the Floating Panel](#) or [the Application Panel](#).