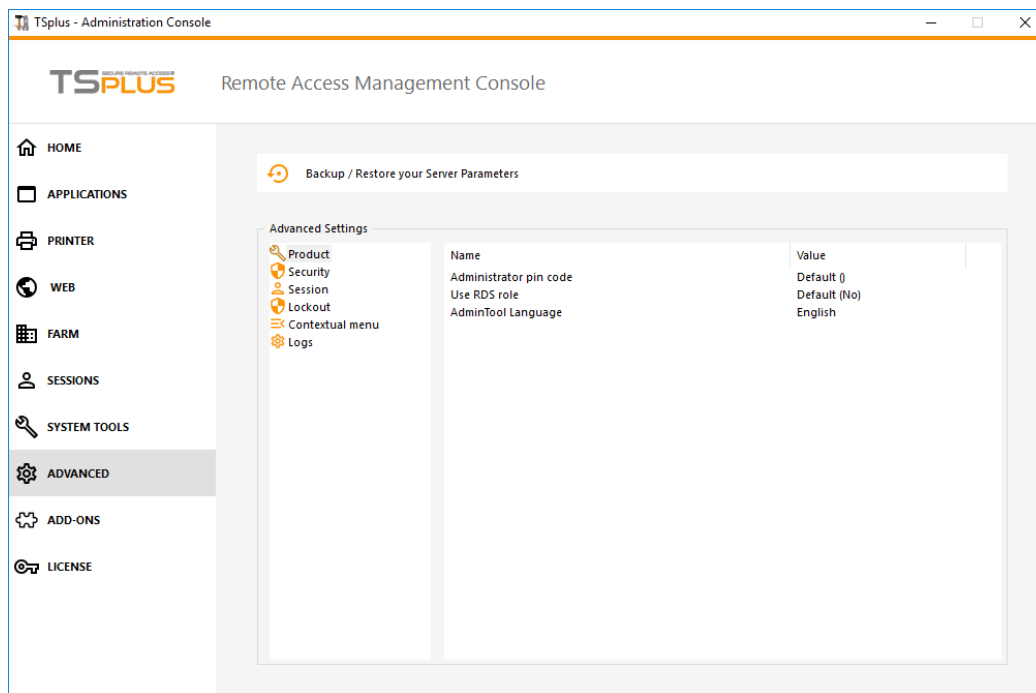


Advanced Features - Product

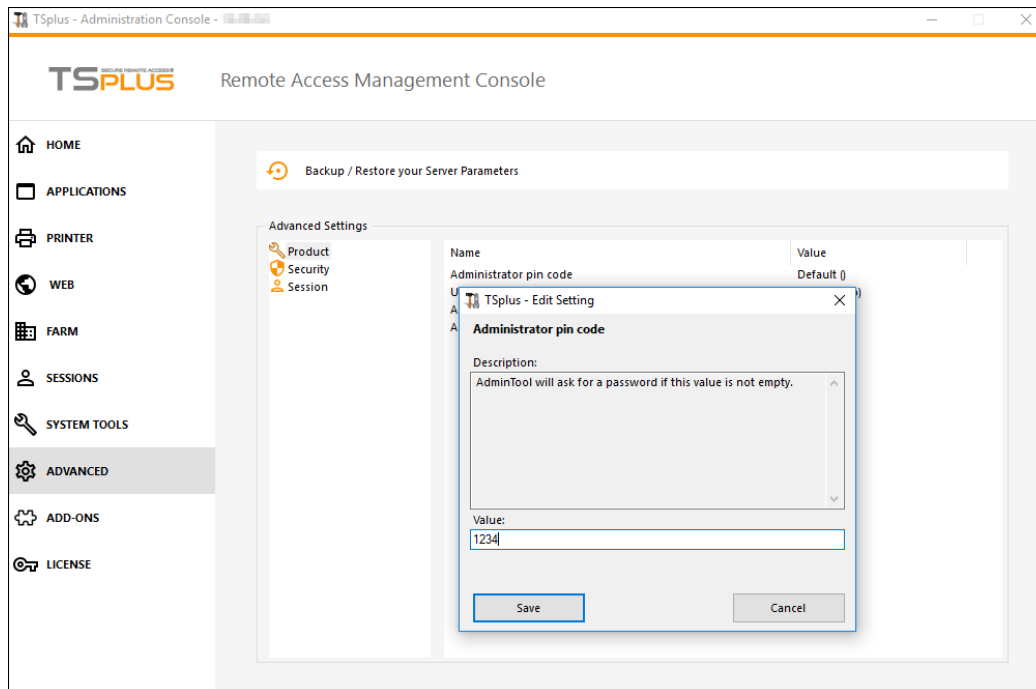
Overview

On this tab, you can modify TSplus settings by adding an AdminTool Pincode, use the Windows RDS role and customize the background color and language of the AdminTool.



Administrator Pin Code

The Administrator can secure the Administrator Tool access by setting a pin code which will be asked at every start, on the Advanced tab of the AdminTool, under the Product Settings:

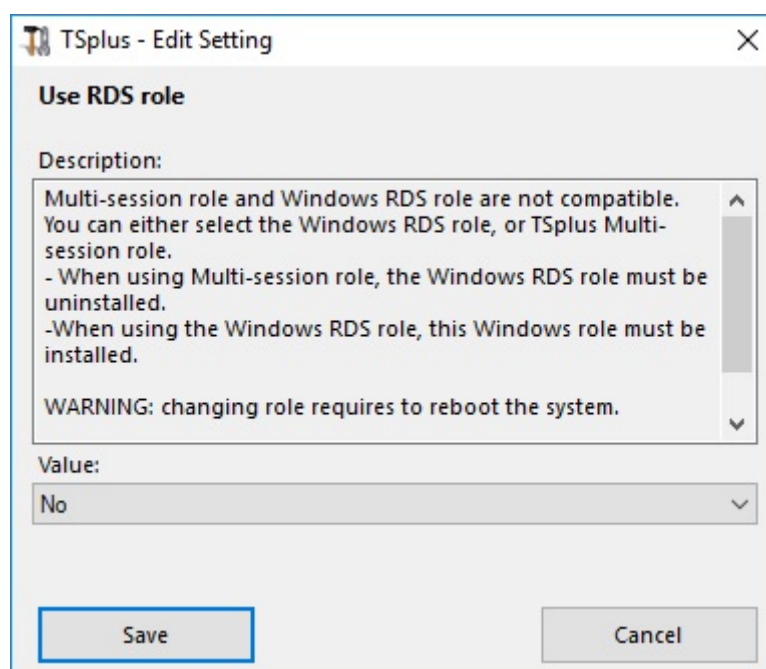


Use RDS role

Multi-session role and Windows RDS role are not compatible. You can either select the Windows RDS role, or TSplus Multi-session role.

- When using Multi-session role, the Windows RDS role must be uninstalled.
- When using the Windows RDS role, this Windows role must be installed.

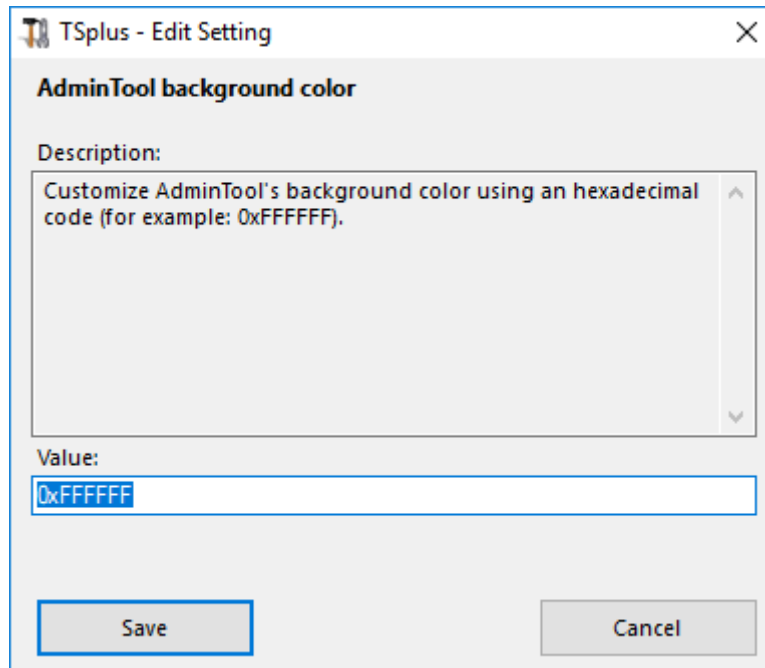
WARNING: changing role requires to reboot the system. When selecting the Windows Remote Desktop, only one user at a time will be allowed on a workstation system.



To use the Windows RDS role, select the "Yes" value and Save.

Modify the AdminTool Background color

Customize AdminTool's background color using an hexadecimal code (for example: 0xFFFFFFFF).



Modify the AdminTool Language

Select your preferred language for the AdminTool among the 21 available.

