

Web Credentials

Overview

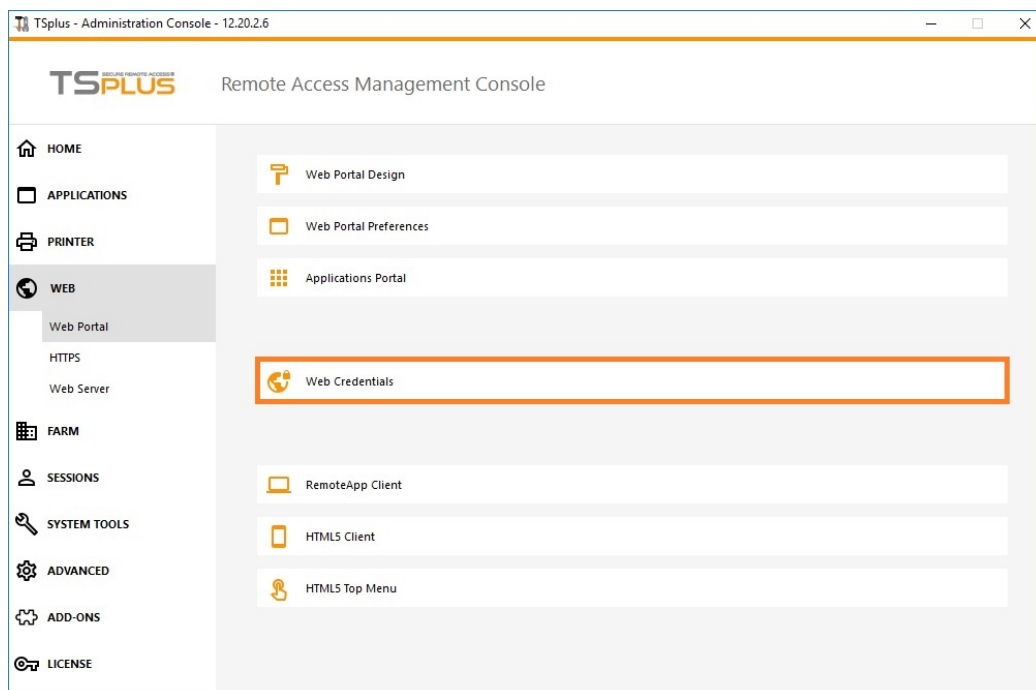
Terminal Service Plus Web Credentials is a state-of-the-art unique feature, which allows users to connect with just an e-mail address or a pin-code.

With Web Credentials, you can secure your server's access with the e-mail address of a user, or with a simple pin-code generated by your business application. One of the great benefits of this feature is that these credentials (e-mail or pin-code) are pure web credentials : the user will not know the Windows user account he is currently using, and he does not need to know a real Windows login/password to connect to his application!

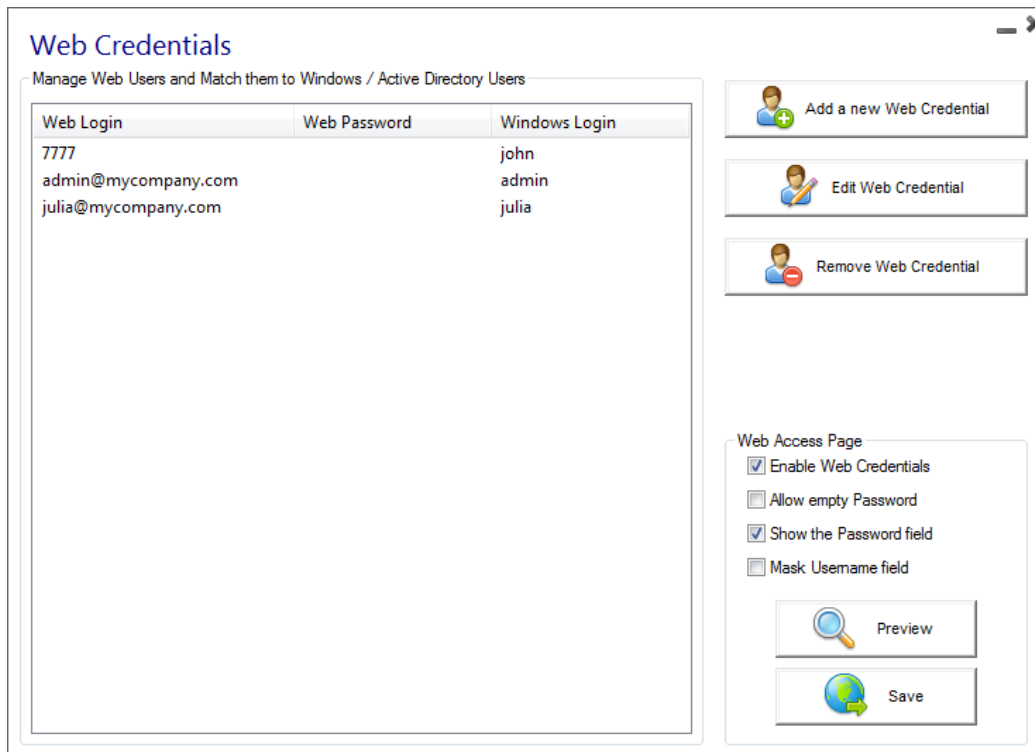
With Web Credentials, you will be able to define custom pure web credentials and match them to any existing Windows / Active Directory user account. The user will then be able to connect using these custom credentials, instead of the Windows / Active Directory ones.

Managing your Web Credentials

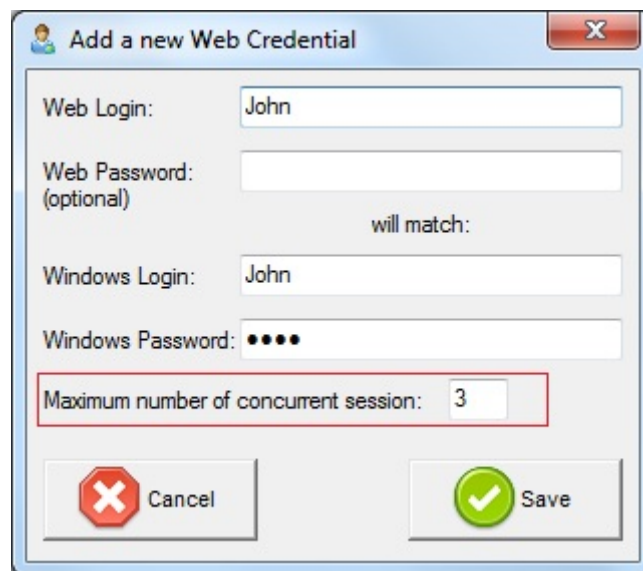
In the Admin Tool, open the "Web" tab and click on the "Web Credentials" tile.



The Web Credentials Manager will open and display this window:



You can now create a new Web Credential by matching a custom login and (optional) password with an existing Windows / Active Directory user account, as shown below:



Since TSplus 9.50 version, you can also decide the maximum number of concurrent sessions for a user.

You can also edit and remove an existing Web Credential, thus changing or disabling any custom credentials you configured.

Alternatively, you can create web credentials via a command line:

validate

- To add a blank credential, type two double quotes: "" to indicate a blank text.

Important Notes

Please note the following limitations:

- '[', ']' and '^' characters are not supported on the password fields.
- In a [Farm / Gateway configuration](#), Web Credentials only support the [load-balancing mode](#) (i.e. it does not work with server-assigned mode)
- In a Farm / Gateway configuration with load-balancing mode, the Web Credentials must be defined on every server of the farm at the moment.