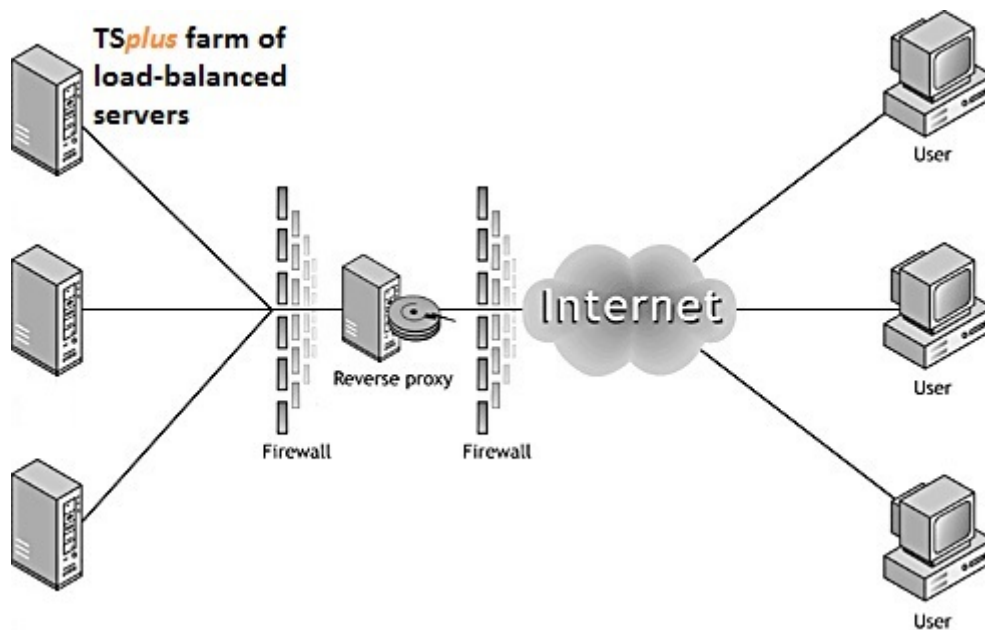


# Using the Reverse Proxy Server Feature

This feature is available in the TSplus Enterprise Edition.

The Reverse Proxy system acts as an intermediary for its associated servers to be contacted by any client. The advantage of using a reverse-proxy is simple: you will no longer need to create as many port redirection rules as your number of TSplus servers.

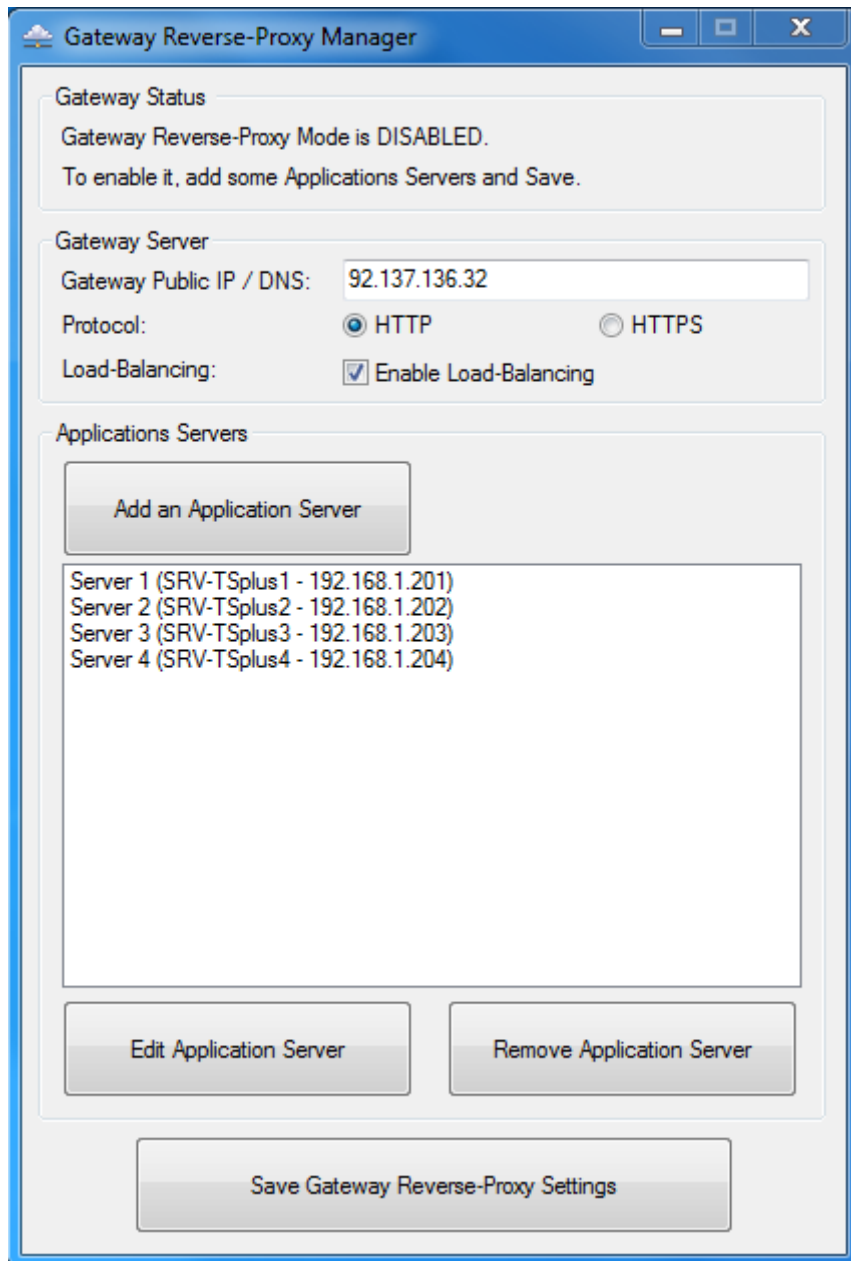
Whether or not you are using the load balancing feature, you need to activate it in order to connect using the reverse proxy. In TSplus, it provides a unique access point to a farm of load-balanced TSplus servers:



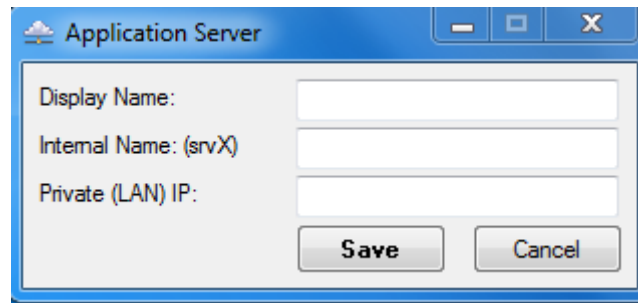
This unique access point will be your Gateway Portal Server.

Since this server is going to be accessed remotely, you will need to set up one port redirection rule on your router, including the http or https ports depending on your preference (80 being the default port for http and 443 for https).

Click on the Farm Tab, then click on the Reverse-Proxy tab:



- The Gateway Public IP must be set with a fixed valid IP address.
- Select Http or Https for your preferred connection method, the servers of your farm must be able to communicate with each other on either port 80 or 443, depending on which connection method you use. It is also important that your windows firewall don't block these ports.
- Enable the load-balancing feature if you wish to load-balance your farm. If you do not activate this feature, you will need to assign the servers of your farm to the Users or Groups. More information on this subject can be found [here](#).
- Click on "Add an Application server" and fill in the Display Name for your server, its hostname in the Internal Name field and its Private (LAN) IP address, then click on "Save".

A dialog box titled "Application Server" with a blue border. It contains three text input fields: "Display Name:", "Internal Name: (srvX)", and "Private (LAN) IP:". Below the fields are two buttons: "Save" and "Cancel".

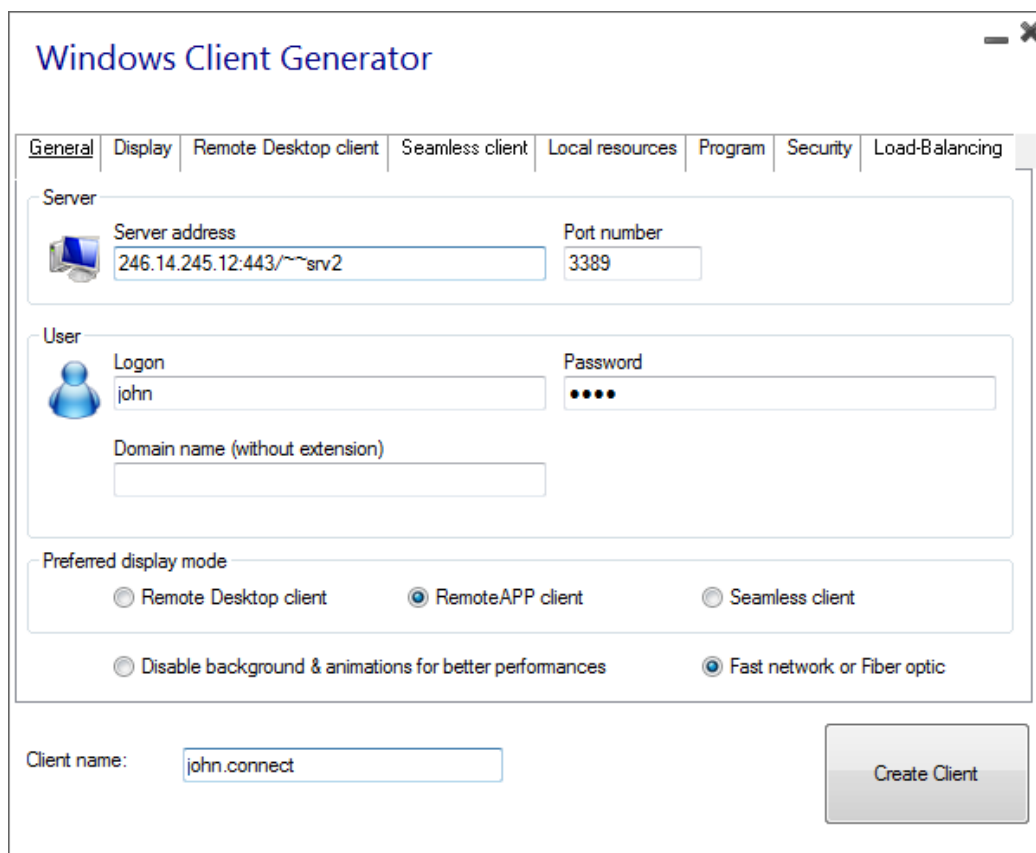
Once you completed your list of servers, click on "Save Gateway Reverse-Proxy settings" and restart the Web services located in the Admin Tool's Web tile.

## Reverse-Proxy and Generated Connection Clients

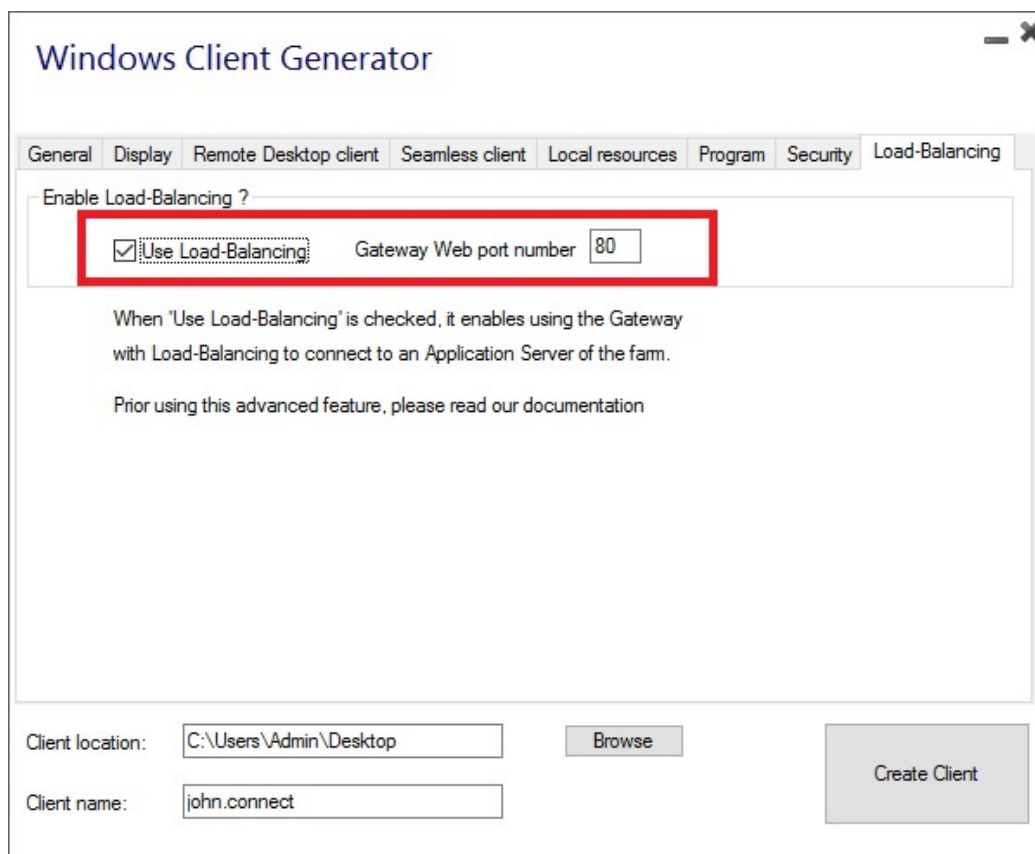
You can generate a Connection Client which will connect to an Application Server through the Reverse-Proxy Server.

To do so, assuming that your gateway has public IP 1.1.1.1 and your backend server has internal name "srv2", then use the special URL 1.1.1.1:443/~~srv2 in the server address field of the Connection Client Generator.

For example:

A dialog box titled "Windows Client Generator" with a blue header. It has several tabs: "General", "Display", "Remote Desktop client", "Seamless client", "Local resources", "Program", "Security", and "Load-Balancing". The "General" tab is selected. It contains sections for "Server" (with "Server address" and "Port number" fields), "User" (with "Logon", "Password", and "Domain name" fields), and "Preferred display mode" (with radio buttons for "Remote Desktop client", "RemoteAPP client", "Seamless client", "Disable background & animations for better performances", and "Fast network or Fiber optic"). At the bottom, there is a "Client name" field and a "Create Client" button.

Don't forget to also check this box:



The screenshot shows the 'Windows Client Generator' window with the 'Load-Balancing' tab selected. A red rectangle highlights the 'Use Load-Balancing' checkbox, which is checked, and the 'Gateway Web port number' field, which contains the value '80'. Below this, there is explanatory text about the feature and a warning to read documentation. At the bottom, there are fields for 'Client location' (C:\Users\Admin\Desktop) and 'Client name' (john.connect), along with 'Browse' and 'Create Client' buttons.

Windows Client Generator

General Display Remote Desktop client Seamless client Local resources Program Security Load-Balancing

Enable Load-Balancing ?

☒ Use Load-Balancing Gateway Web port number 80

When 'Use Load-Balancing' is checked, it enables using the Gateway with Load-Balancing to connect to an Application Server of the farm.

Prior using this advanced feature, please read our documentation

Client location: C:\Users\Admin\Desktop Browse

Client name: john.connect Create Client

Unless you want to connect to a given Application server.