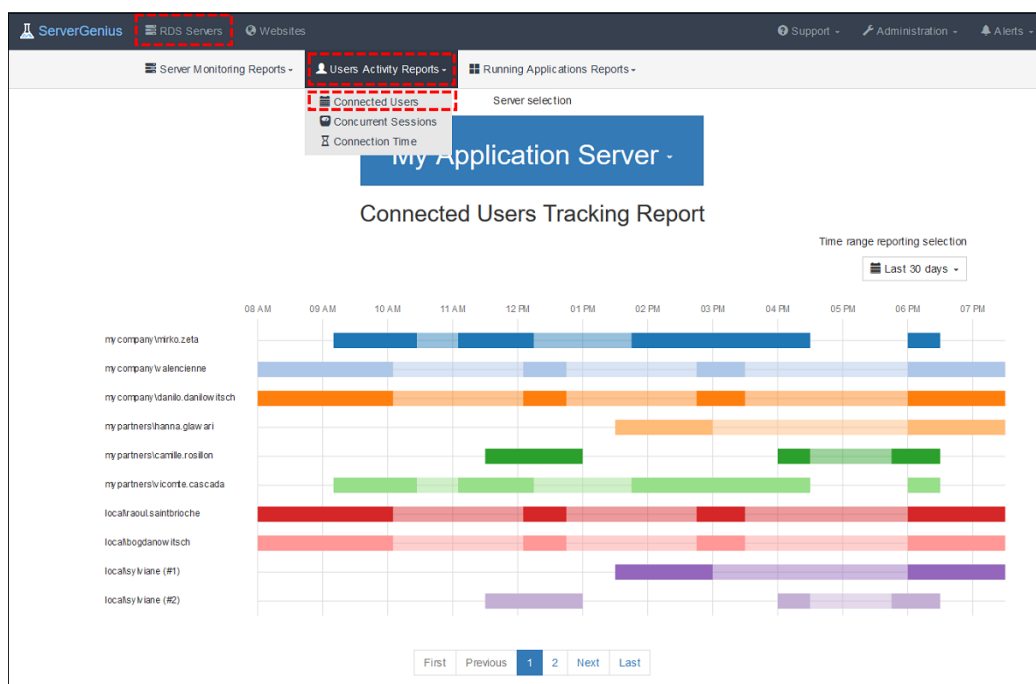


Connected Users Tracking Report

This report is available from the ServerGenius Web interface by clicking on the RDS Servers tab, then Users Activity Reports tab, and then Connected Users.

It displays the log of the **opened Remote Desktop Services (RDS) sessions** for the selected period of time.

The date-range can be customized by using the date-range picker at the top right of the Web page.



[Back To Top](#)