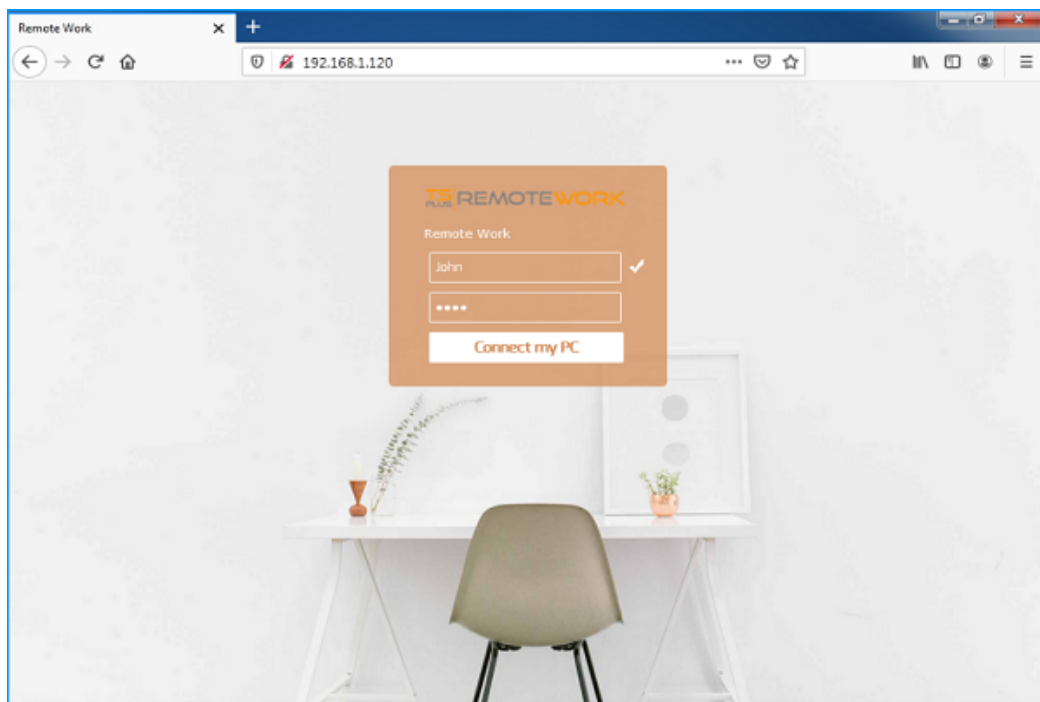


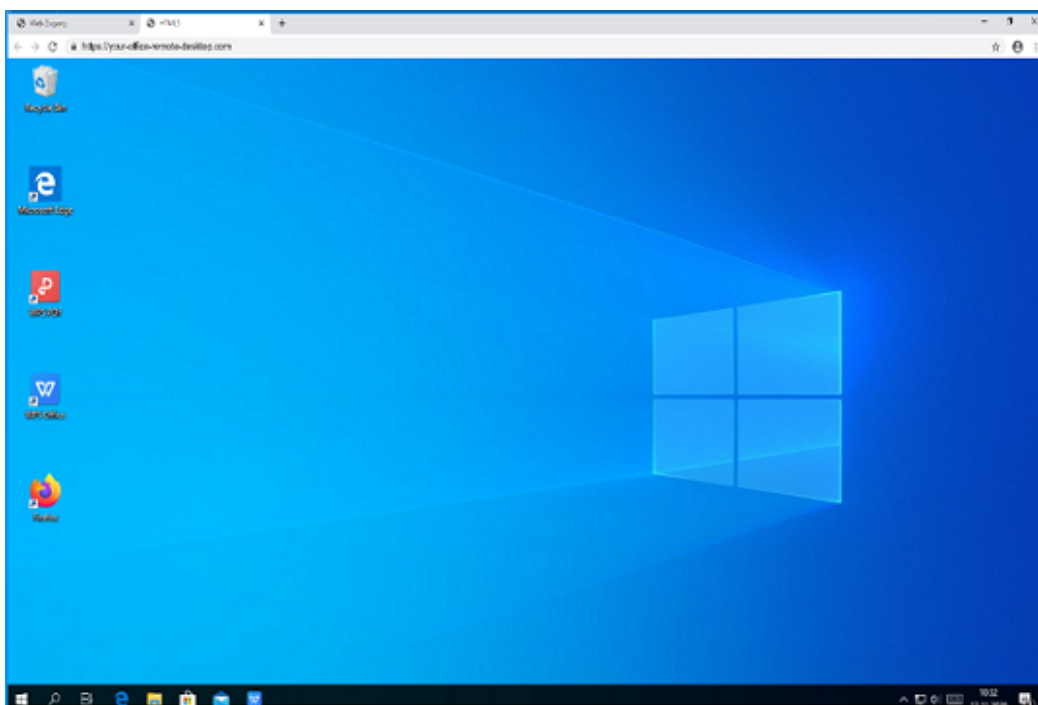
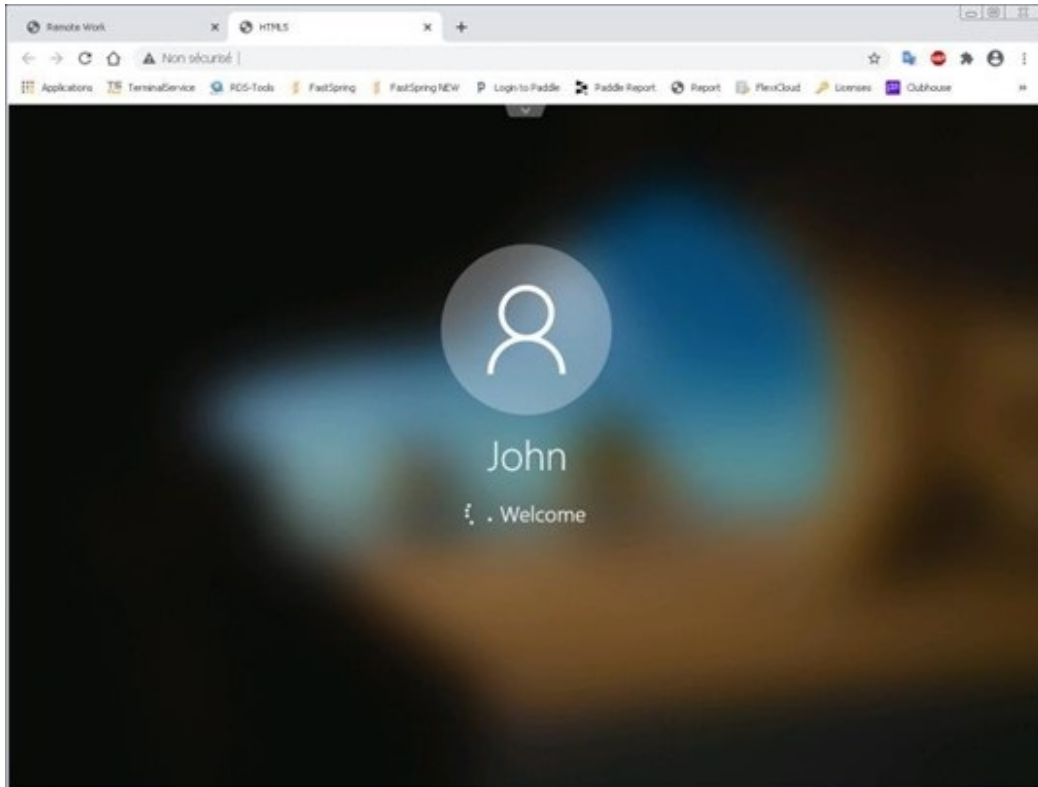
Using TSplus Remote Work

Login

From his home PC, John opens a web browser (Firefox, Chrome or Edge for example). Then, he types the address of his Connection Broker and enters his login information:

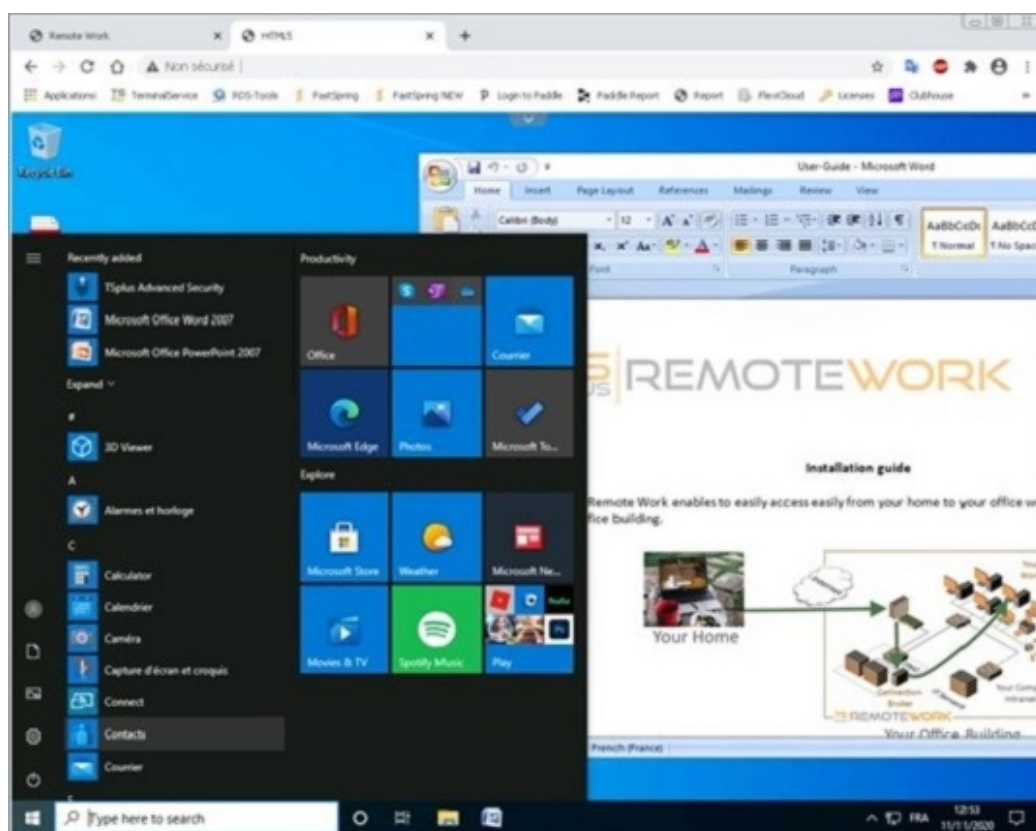


Done: The logon goes to John's office workstation.



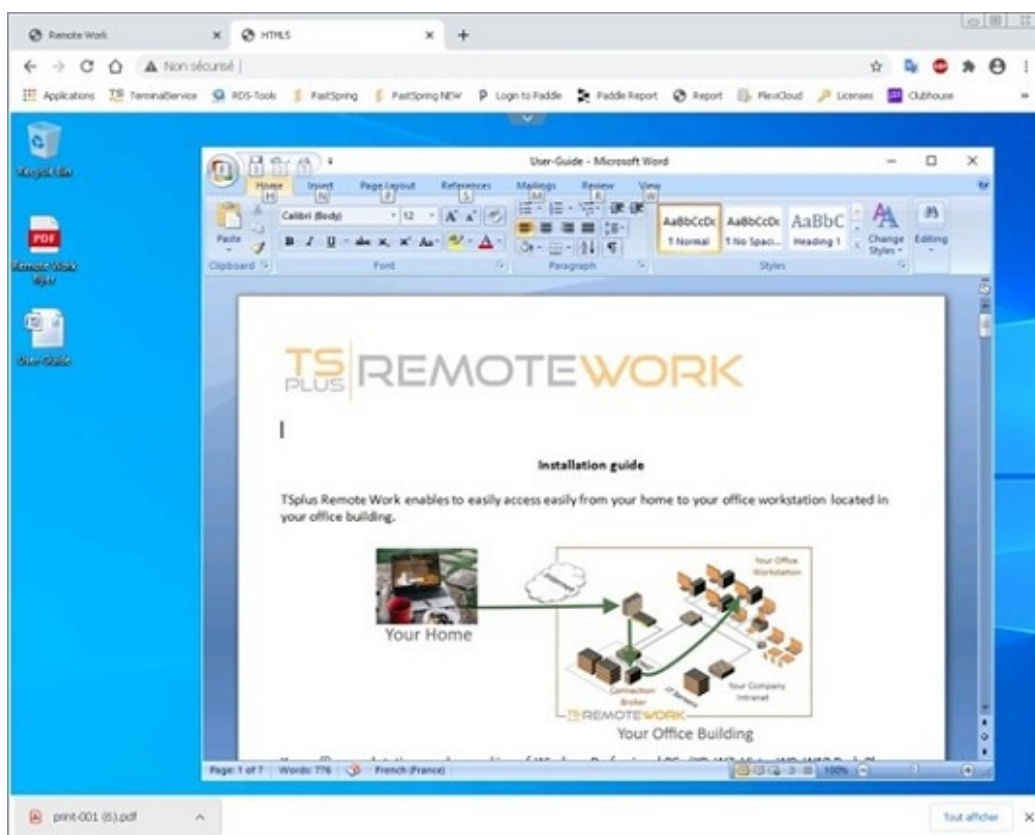
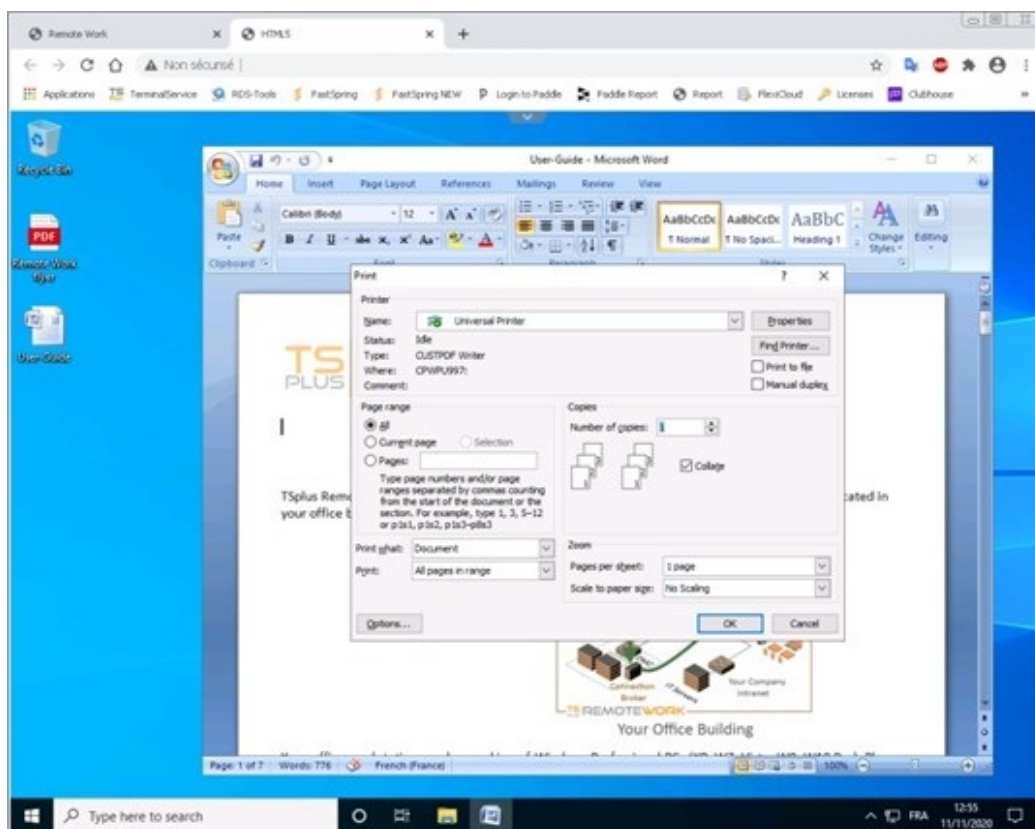
Session Capture

If John leaves the office with unfinished work and opens a session on his workstation, TSplus Remote Work will capture his Desktop when he will start working from home.



Printing

John can print documents on his local printer at home. He just has to select the Universal Printer. The Universal Printer turns each of John's print into a PDF file. This PDF is saved by his web browser:



John can display, print or save this PDF print file on his home PC.